

**GRK 1 rabbit pAb****Cat#: orb765351 (Manual)**

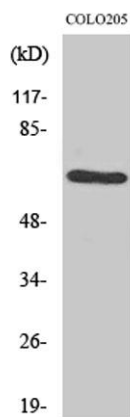
For research use only. Not intended for diagnostic use.

<b>Product Name</b>	GRK 1 rabbit pAb
<b>Host species</b>	Rabbit
<b>Applications</b>	WB;IHC;IF;ELISA
<b>Species Cross-Reactivity</b>	Human;Mouse;Rat
<b>Recommended dilutions</b>	Western Blot: 1/500 - 1/2000. Immunohistochemistry: 1/100 - 1/300. ELISA: 1/40000. Not yet tested in other applications.
<b>Immunogen</b>	The antiserum was produced against synthesized peptide derived from human GRK1. AA range:6-55
<b>Specificity</b>	GRK 1 Polyclonal Antibody detects endogenous levels of GRK 1 protein.
<b>Formulation</b>	Liquid in PBS containing 50% glycerol, 0.5% BSA and 0.02% sodium azide..
<b>Storage</b>	Store at -20°C. Avoid repeated freeze-thaw cycles.
<b>Protein Name</b>	Rhodopsin kinase
<b>Gene Name</b>	GRK1
<b>Cellular localization</b>	Membrane ; Lipid-anchor . Cell projection, cilium, photoreceptor outer segment . Subcellular location is not affected by light or dark conditions. .
<b>Purification</b>	The antibody was affinity-purified from rabbit antiserum by affinity-chromatography using epitope-specific immunogen.
<b>Clonality</b>	Polyclonal

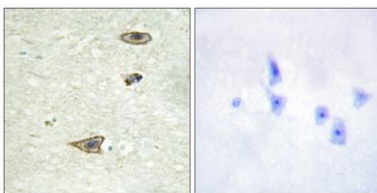
<b>Concentration</b>	1 mg/ml
<b>Observed band</b>	63kD
<b>Human Gene ID</b>	6011
<b>Human Swiss-Prot Number</b>	Q15835
<b>Alternative Names</b>	GRK1; RHOK; Rhodopsin kinase; RK; G protein-coupled receptor kinase 1

**Background**

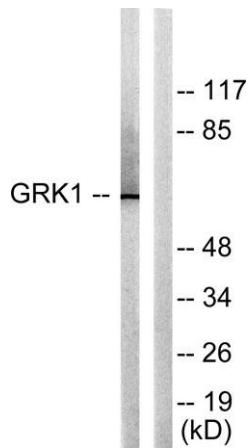
This gene encodes a member of the guanine nucleotide-binding protein (G protein)-coupled receptor kinase subfamily of the Ser/Thr protein kinase family. The protein phosphorylates rhodopsin and initiates its deactivation. Defects in GRK1 are known to cause Oguchi disease 2 (also known as stationary night blindness Oguchi type-2). [provided by RefSeq, Jul 2008],



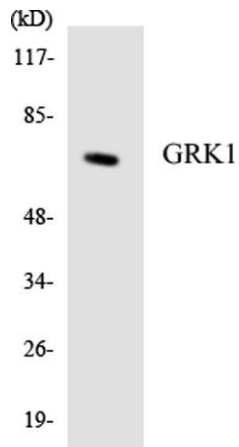
**Western Blot analysis of various cells using GRK 1 Polyclonal Antibody**



**Immunohistochemistry analysis of paraffin-embedded human brain tissue, using GRK1 Antibody. The picture on the right is blocked with the synthesized peptide.**



**Western blot analysis of lysates from COLO205 cells, using GRK1 Antibody. The lane on the right is blocked with the synthesized peptide.**



**Western blot analysis of the lysates from Jurkat cells using GRK1 antibody.**