

**GPR38 rabbit pAb****Cat#: orb765338 (Manual)**

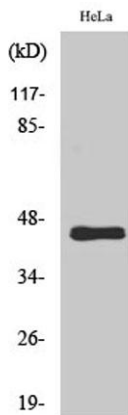
For research use only. Not intended for diagnostic use.

<b>Product Name</b>	GPR38 rabbit pAb
<b>Host species</b>	Rabbit
<b>Applications</b>	WB;ELISA
<b>Species Cross-Reactivity</b>	Human;Rat;Mouse;
<b>Recommended dilutions</b>	Western Blot: 1/500 - 1/2000. ELISA: 1/20000. Not yet tested in other applications.
<b>Immunogen</b>	Synthesized peptide derived from the C-terminal region of human GPR38.
<b>Specificity</b>	GPR38 Polyclonal Antibody detects endogenous levels of GPR38 protein.
<b>Formulation</b>	Liquid in PBS containing 50% glycerol, 0.5% BSA and 0.02% sodium azide..
<b>Storage</b>	Store at -20°C. Avoid repeated freeze-thaw cycles.
<b>Protein Name</b>	Motilin receptor
<b>Gene Name</b>	MLNR
<b>Cellular localization</b>	Cell membrane; Multi-pass membrane protein.
<b>Purification</b>	The antibody was affinity-purified from rabbit antiserum by affinity-chromatography using epitope-specific immunogen.
<b>Clonality</b>	Polyclonal

<b>Concentration</b>	1 mg/ml
<b>Observed band</b>	45kD
<b>Human Gene ID</b>	2862
<b>Human Swiss-Prot Number</b>	O43193
<b>Alternative Names</b>	MLNR; GPR38; MTLR; MTLR1; Motilin receptor; G-protein coupled receptor 38

**Background**

Motilin is a 22 amino acid peptide hormone expressed throughout the gastrointestinal (GI) tract. The protein encoded by this gene is a motilin receptor which is a member of the G-protein coupled receptor 1 family. This member is a multi-pass transmembrane protein, and is an important therapeutic target for the treatment of hypomotility disorders. [provided by RefSeq, Aug 2011],



**Western Blot analysis of various cells using GPR38 Polyclonal Antibody**