

## Glucosidase II $\beta$ rabbit pAb

**Cat#: orb765309 (Manual)**

For research use only. Not intended for diagnostic use.

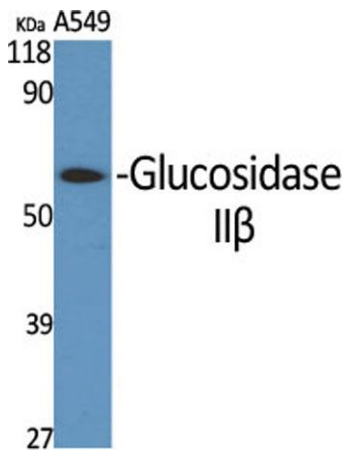
<b>Product Name</b>	Glucosidase II $\beta$ rabbit pAb
<b>Host species</b>	Rabbit
<b>Applications</b>	WB;IF;ELISA
<b>Species Cross-Reactivity</b>	Human;Mouse
<b>Recommended dilutions</b>	Western Blot: 1/500 - 1/2000. Immunofluorescence: 1/200 - 1/1000. ELISA: 1/10000. Not yet tested in other applications.
<b>Immunogen</b>	The antiserum was produced against synthesized peptide derived from human GLU2B. AA range:81-130
<b>Specificity</b>	Glucosidase II $\beta$ Polyclonal Antibody detects endogenous levels of Glucosidase II $\beta$ protein.
<b>Formulation</b>	Liquid in PBS containing 50% glycerol, 0.5% BSA and 0.02% sodium azide..
<b>Storage</b>	Store at -20°C. Avoid repeated freeze-thaw cycles.
<b>Protein Name</b>	Glucosidase 2 subunit beta
<b>Gene Name</b>	PRKCSH
<b>Cellular localization</b>	Endoplasmic reticulum .
<b>Purification</b>	The antibody was affinity-purified from rabbit antiserum by affinity-chromatography using epitope-specific immunogen.
<b>Clonality</b>	Polyclonal

Explore. Bioreagents.

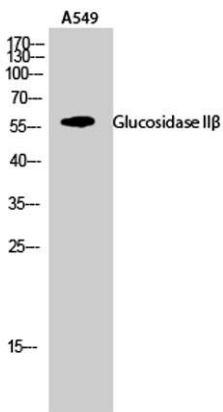
<b>Concentration</b>	1 mg/ml
<b>Observed band</b>	59kD
<b>Human Gene ID</b>	5589
<b>Human Swiss-Prot Number</b>	P14314
<b>Alternative Names</b>	PRKCSH; G19P1; Glucosidase 2 subunit beta; 80K-H protein; Glucosidase II subunit beta; Protein kinase C substrate 60.1 kDa protein heavy chain; PKCSH

**Background**

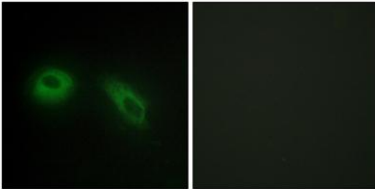
This gene encodes the beta-subunit of glucosidase II, an N-linked glycan-processing enzyme in the endoplasmic reticulum. The encoded protein is an acidic phosphoprotein known to be a substrate for protein kinase C. Mutations in this gene have been associated with the autosomal dominant polycystic liver disease. Alternative splicing results in multiple transcript variants. [provided by RefSeq, Jan 2014],



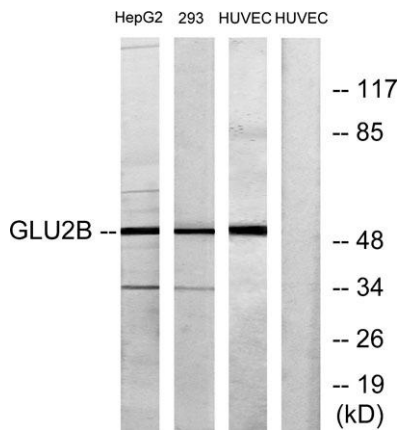
Western Blot analysis of various cells using Glucosidase IIβ Polyclonal Antibody



Western Blot analysis of A549 cells using Glucosidase IIβ Polyclonal Antibody



**Immunofluorescence analysis of HeLa cells, using GLU2B Antibody. The picture on the right is blocked with the synthesized peptide.**



**Western blot analysis of lysates from HepG2, 293, and HUVEC cells, using GLU2B Antibody. The lane on the right is blocked with the synthesized peptide.**