

Glucagon Receptor rabbit pAb

Cat#: orb765308 (Manual)

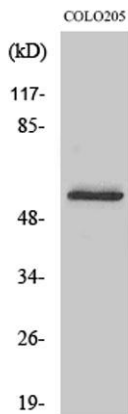
For research use only. Not intended for diagnostic use.

| | |
|---------------------------------|--|
| Product Name | Glucagon Receptor rabbit pAb |
| Host species | Rabbit |
| Applications | WB;IF;ELISA |
| Species Cross-Reactivity | Human;Mouse;Rat |
| Recommended dilutions | Western Blot: 1/500 - 1/2000. Immunofluorescence: 1/200 - 1/1000. ELISA: 1/5000. Not yet tested in other applications. |
| Immunogen | The antiserum was produced against synthesized peptide derived from human GLR. AA range:95-144 |
| Specificity | Glucagon Receptor Polyclonal Antibody detects endogenous levels of Glucagon Receptor protein. |
| Formulation | Liquid in PBS containing 50% glycerol, 0.5% BSA and 0.02% sodium azide.. |
| Storage | Store at -20°C. Avoid repeated freeze-thaw cycles. |
| Protein Name | Glucagon receptor |
| Gene Name | GCGR |
| Cellular localization | Cell membrane ; Multi-pass membrane protein . Is rapidly internalized after ligand-binding. . |
| Purification | The antibody was affinity-purified from rabbit antiserum by affinity-chromatography using epitope-specific immunogen. |
| Clonality | Polyclonal |

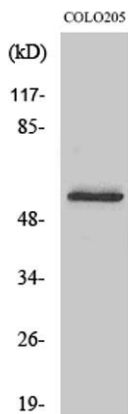
| | |
|--------------------------------|-------------------------------|
| Concentration | 1 mg/ml |
| Observed band | 54kD |
| Human Gene ID | 2642 |
| Human Swiss-Prot Number | P47871 |
| Alternative Names | GCGR; Glucagon receptor; GL-R |

Background

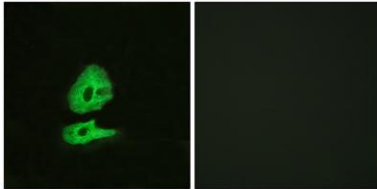
glucagon receptor(GCGR) Homo sapiens The protein encoded by this gene is a glucagon receptor that is important in controlling blood glucose levels. Defects in this gene are a cause of non-insulin-dependent diabetes mellitus (NIDDM).[provided by RefSeq, Jan 2010],



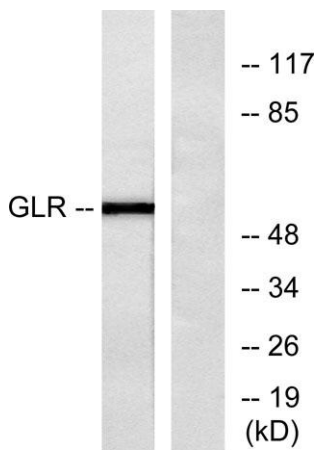
Western Blot analysis of various cells using Glucagon Receptor Polyclonal Antibody



Western Blot analysis of COLO205 cells using Glucagon Receptor Polyclonal Antibody



Immunofluorescence analysis of HeLa cells, using GLR Antibody. The picture on the right is blocked with the synthesized peptide.



Western blot analysis of lysates from COLO205 cells, using GLR Antibody. The lane on the right is blocked with the synthesized peptide.