

**GLP-1R rabbit pAb****Cat#: orb765307 (Manual)**

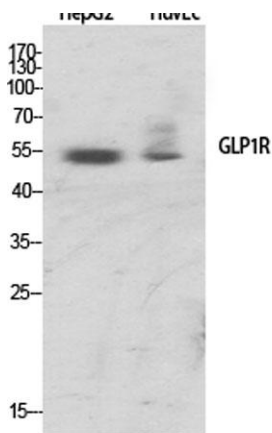
For research use only. Not intended for diagnostic use.

<b>Product Name</b>	GLP-1R rabbit pAb
<b>Host species</b>	Rabbit
<b>Applications</b>	WB;IF;ELISA
<b>Species Cross-Reactivity</b>	Human;Mouse;Rat
<b>Recommended dilutions</b>	Western Blot: 1/500 - 1/2000. Immunofluorescence: 1/200 - 1/1000. ELISA: 1/5000. Not yet tested in other applications.
<b>Immunogen</b>	The antiserum was produced against synthesized peptide derived from human GLP1R. AA range:101-150
<b>Specificity</b>	GLP-1R Polyclonal Antibody detects endogenous levels of GLP-1R protein.
<b>Formulation</b>	Liquid in PBS containing 50% glycerol, 0.5% BSA and 0.02% sodium azide..
<b>Storage</b>	Store at -20°C. Avoid repeated freeze-thaw cycles.
<b>Protein Name</b>	Glucagon-like peptide 1 receptor
<b>Gene Name</b>	GLP1R
<b>Cellular localization</b>	Cell membrane ; Multi-pass membrane protein .
<b>Purification</b>	The antibody was affinity-purified from rabbit antiserum by affinity-chromatography using epitope-specific immunogen.
<b>Clonality</b>	Polyclonal

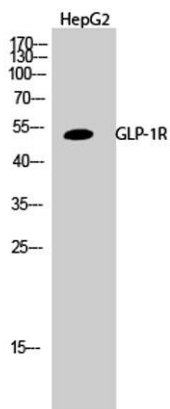
<b>Concentration</b>	1 mg/ml
<b>Observed band</b>	53kD
<b>Human Gene ID</b>	2740
<b>Human Swiss-Prot Number</b>	P43220
<b>Alternative Names</b>	GLP1R; Glucagon-like peptide 1 receptor; GLP-1 receptor; GLP-1-R; GLP-1R

**Background**

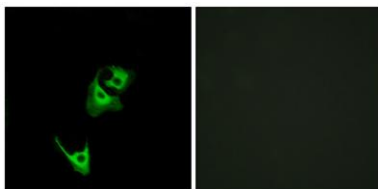
glucagon like peptide 1 receptor(GLP1R) Homo sapiens This gene encodes a 7-transmembrane protein that functions as a receptor for glucagon-like peptide 1 (GLP-1) hormone, which stimulates glucose-induced insulin secretion. This receptor, which functions at the cell surface, becomes internalized in response to GLP-1 and GLP-1 analogs, and it plays an important role in the signaling cascades leading to insulin secretion. It also displays neuroprotective effects in animal models. Polymorphisms in this gene are associated with diabetes. The protein is an important drug target for the treatment of type 2 diabetes and stroke. Alternative splicing of this gene results in multiple transcript variants. [provided by RefSeq, Apr 2016],



**Western Blot analysis of various cells using GLP-1R Polyclonal Antibody**



**Western Blot analysis of HepG2 cells using GLP-1R Polyclonal Antibody**



**Immunofluorescence analysis of HeLa cells, using GLP1R Antibody. The picture on the right is blocked with the synthesized peptide.**