

**GK2 rabbit pAb****Cat#: orb765305 (Manual)**

For research use only. Not intended for diagnostic use.

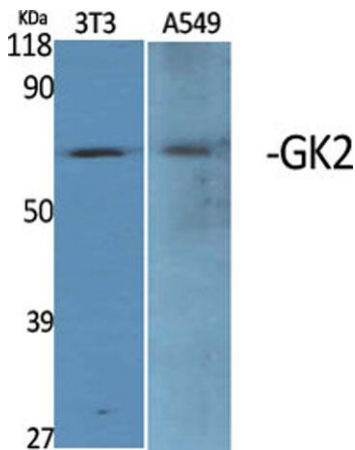
<b>Product Name</b>	GK2 rabbit pAb
<b>Host species</b>	Rabbit
<b>Applications</b>	WB;IHC;IF;ELISA
<b>Species Cross-Reactivity</b>	Human;Rat;Mouse;
<b>Recommended dilutions</b>	Western Blot: 1/500 - 1/2000. Immunohistochemistry: 1/100 - 1/300. Immunofluorescence: 1/200 - 1/1000. ELISA: 1/20000. Not yet tested in other applications.
<b>Immunogen</b>	The antiserum was produced against synthesized peptide derived from human GK2. AA range:281-330
<b>Specificity</b>	GK2 Polyclonal Antibody detects endogenous levels of GK2 protein.
<b>Formulation</b>	Liquid in PBS containing 50% glycerol, 0.5% BSA and 0.02% sodium azide..
<b>Storage</b>	Store at -20°C. Avoid repeated freeze-thaw cycles.
<b>Protein Name</b>	Glycerol kinase 2
<b>Gene Name</b>	GK2
<b>Cellular localization</b>	Mitochondrion outer membrane ; Single-pass type IV membrane protein . Cytoplasm . In sperm the majority of the enzyme is bound to mitochondria. .
<b>Purification</b>	The antibody was affinity-purified from rabbit antiserum by affinity-chromatography using epitope-specific immunogen.
<b>Clonality</b>	Polyclonal

Explore. Bioreagents.

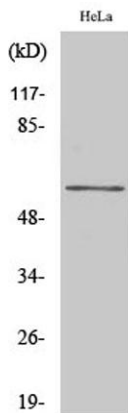
<b>Concentration</b>	1 mg/ml
<b>Observed band</b>	61kD
<b>Human Gene ID</b>	2712
<b>Human Swiss-Prot Number</b>	Q14410
<b>Alternative Names</b>	GK2; GKP2; GKTA; Glycerol kinase 2; GK 2; Glycerokinase 2; ATP:glycerol 3-phosphotransferase 2; Glycerol kinase; testis specific 2

**Background**

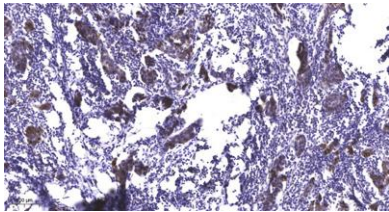
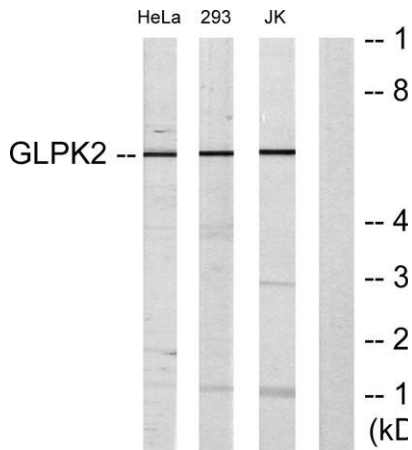
catalytic activity:ATP + glycerol = ADP + sn-glycerol 3-phosphate.,function:Key enzyme in the regulation of glycerol uptake and metabolism.,pathway:Polyol metabolism; glycerol degradation via glycerol kinase pathway; sn-glycerol 3-phosphate from glycerol: step 1/1.,similarity:Belongs to the FGGY kinase family.,subcellular location:In sperm the majority of the enzyme is bound to mitochondria.,



**Western Blot analysis of various cells using GK2 Polyclonal Antibody**



**Western Blot analysis of Jurkat cells using GK2 Polyclonal Antibody**



**Immunohistochemical analysis of paraffin-embedded human Breast cancer. 1, Antibody was diluted at 1:200(4° overnight). 2, Tris-EDTA,pH9.0 was used for antigen retrieval. 3,Secondary antibody was diluted at 1:200(room temperature, 45min).**