

GK1/3 rabbit pAb**Cat#: orb765304 (Manual)**

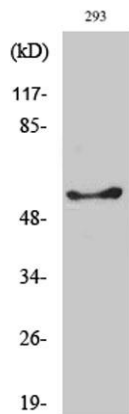
For research use only. Not intended for diagnostic use.

| | |
|---------------------------------|--|
| Product Name | GK1/3 rabbit pAb |
| Host species | Rabbit |
| Applications | WB;IHC;IF;ELISA |
| Species Cross-Reactivity | Human;Rat;Mouse; |
| Recommended dilutions | Western Blot: 1/500 - 1/2000. Immunohistochemistry: 1/100 - 1/300. ELISA: 1/40000. Not yet tested in other applications. |
| Immunogen | The antiserum was produced against synthesized peptide derived from human GK3. AA range:21-70 |
| Specificity | GK1/3 Polyclonal Antibody detects endogenous levels of GK1/3 protein. |
| Formulation | Liquid in PBS containing 50% glycerol, 0.5% BSA and 0.02% sodium azide.. |
| Storage | Store at -20°C. Avoid repeated freeze-thaw cycles. |
| Protein Name | Putative glycerol kinase 3 |
| Gene Name | GK/GK3P |
| Cellular localization | Mitochondrion outer membrane; Peripheral membrane protein; Cytoplasmic side. Cytoplasm. In sperm and fetal tissues, the majority of the enzyme is bound to mitochondria, but in adult tissues, such as liver found in the cytoplasm. |
| Purification | The antibody was affinity-purified from rabbit antiserum by affinity-chromatography using epitope-specific immunogen. |

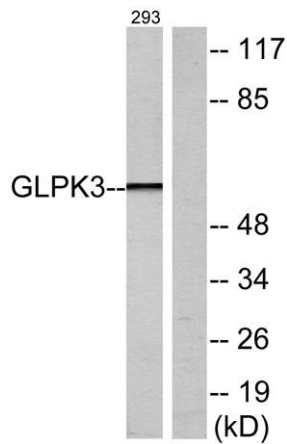
| | |
|--------------------------------|---|
| Clonality | Polyclonal |
| Concentration | 1 mg/ml |
| Observed band | 61kD |
| Human Gene ID | 2713 |
| Human Swiss-Prot Number | P32189/Q14409 |
| Alternative Names | GK; Glycerol kinase; GK; Glycerokinase; ATP:glycerol 3-phosphotransferase; GK3P; GKP3; GKTB; Putative glycerol kinase 3; GK 3; Glycerokinase 3; ATP:glycerol 3-phosphotransferase 3; Glycerol kinase; testis specific 1 |

Background

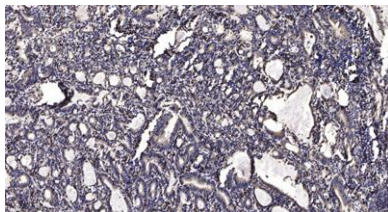
The protein encoded by this gene belongs to the FGGY kinase family. This protein is a key enzyme in the regulation of glycerol uptake and metabolism. It catalyzes the phosphorylation of glycerol by ATP, yielding ADP and glycerol-3-phosphate. Mutations in this gene are associated with glycerol kinase deficiency (GKD). Alternatively spliced transcript variants encoding different isoforms have been found for this gene. [provided by RefSeq, Mar 2011],



Western Blot analysis of various cells using GK1/3 Polyclonal Antibody



Western blot analysis of lysates from 293 cells, using GK3 Antibody. The lane on the right is blocked with the synthesized peptide.



Immunohistochemical analysis of paraffin-embedded human Gastric adenocarcinoma. 1, Antibody was diluted at 1:200(4° overnight). 2, Tris-EDTA,pH9.0 was used for antigen retrieval. 3,Secondary antibody was diluted at 1:200(room temperature, 45min).