

GK1 rabbit pAb**Cat#: orb765303 (Manual)**

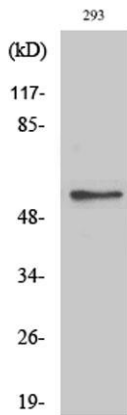
For research use only. Not intended for diagnostic use.

Product Name	GK1 rabbit pAb
Host species	Rabbit
Applications	WB;IF;ELISA
Species Cross-Reactivity	Human;Mouse;Rat
Recommended dilutions	Western Blot: 1/500 - 1/2000. Immunofluorescence: 1/200 - 1/1000. ELISA: 1/20000. Not yet tested in other applications.
Immunogen	The antiserum was produced against synthesized peptide derived from human GK. AA range:461-510
Specificity	GK1 Polyclonal Antibody detects endogenous levels of GK1 protein.
Formulation	Liquid in PBS containing 50% glycerol, 0.5% BSA and 0.02% sodium azide..
Storage	Store at -20°C. Avoid repeated freeze-thaw cycles.
Protein Name	Glycerol kinase
Gene Name	GK
Cellular localization	Mitochondrion outer membrane; Peripheral membrane protein; Cytoplasmic side. Cytoplasm. In sperm and fetal tissues, the majority of the enzyme is bound to mitochondria, but in adult tissues, such as liver found in the cytoplasm.
Purification	The antibody was affinity-purified from rabbit antiserum by affinity-chromatography using epitope-specific immunogen.

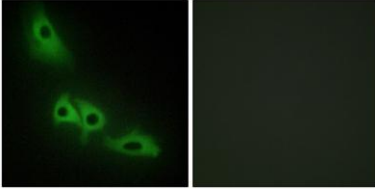
Clonality	Polyclonal
Concentration	1 mg/ml
Observed band	57kD
Human Gene ID	2710
Human Swiss-Prot Number	P32189
Alternative Names	GK; Glycerol kinase; GK; Glycerokinase; ATP:glycerol 3-phosphotransferase

Background

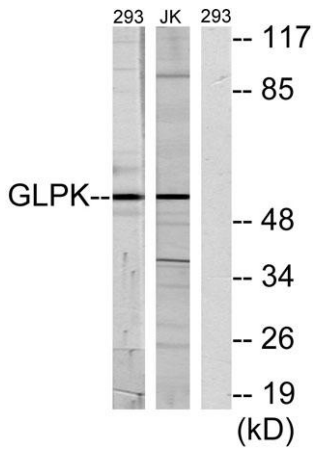
The protein encoded by this gene belongs to the FGGY kinase family. This protein is a key enzyme in the regulation of glycerol uptake and metabolism. It catalyzes the phosphorylation of glycerol by ATP, yielding ADP and glycerol-3-phosphate. Mutations in this gene are associated with glycerol kinase deficiency (GKD). Alternatively spliced transcript variants encoding different isoforms have been found for this gene. [provided by RefSeq, Mar 2011],



Western Blot analysis of various cells using GK1 Polyclonal Antibody diluted at 1:2000



Immunofluorescence analysis of HeLa cells, using GK Antibody. The picture on the right is blocked with the synthesized peptide.



Western blot analysis of lysates from 293 and Jurkat cells, using GK Antibody. The lane on the right is blocked with the synthesized peptide.