

GCS- α -1 rabbit pAb**Cat#: orb765291 (Manual)**

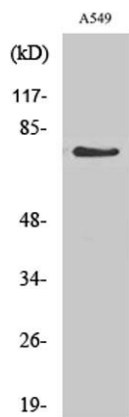
For research use only. Not intended for diagnostic use.

Product Name	GCS- α -1 rabbit pAb
Host species	Rabbit
Applications	WB;CoIP;IHC;IF;ELISA
Species Cross-Reactivity	Human;Mouse;Rat
Recommended dilutions	Western Blot: 1/500 - 1/2000. Immunohistochemistry: 1/100 - 1/300. ELISA: 1/40000. Not yet tested in other applications.
Immunogen	The antiserum was produced against synthesized peptide derived from human GCS- α -1. AA range:374-423
Specificity	GCS- α -1 Polyclonal Antibody detects endogenous levels of GCS- α -1 protein.
Formulation	Liquid in PBS containing 50% glycerol, 0.5% BSA and 0.02% sodium azide..
Storage	Store at -20°C. Avoid repeated freeze-thaw cycles.
Protein Name	Guanylate cyclase soluble subunit alpha-3
Gene Name	GUCY1A3
Cellular localization	Cytoplasm .
Purification	The antibody was affinity-purified from rabbit antiserum by affinity-chromatography using epitope-specific immunogen.
Clonality	Polyclonal

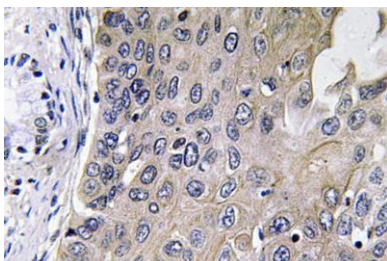
Concentration	1 mg/ml
Observed band	77kD
Human Gene ID	2982
Human Swiss-Prot Number	Q02108
Alternative Names	GUCY1A3; GUC1A3; GUCSA3; GUCY1A1; Guanylate cyclase soluble subunit alpha-3; GCS-alpha-3; GCS-alpha-1; Soluble guanylate cyclase large subunit

Background

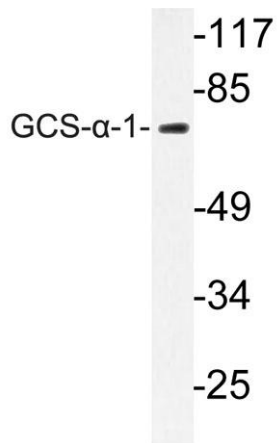
Soluble guanylate cyclases are heterodimeric proteins that catalyze the conversion of GTP to 3',5'-cyclic GMP and pyrophosphate. The protein encoded by this gene is an alpha subunit of this complex and it interacts with a beta subunit to form the guanylate cyclase enzyme, which is activated by nitric oxide. Several transcript variants encoding a few different isoforms have been found for this gene. [provided by RefSeq, Jan 2012],



Western Blot analysis of various cells using GCS- α -1 Polyclonal Antibody



Immunohistochemistry analysis of GCS- α -1 antibody in paraffin-embedded human lung carcinoma tissue.



Western blot analysis of lysate from A549 cells, using GCS- α -1 antibody.