

GCSm- γ rabbit pAb**Cat#: orb765290 (Manual)**

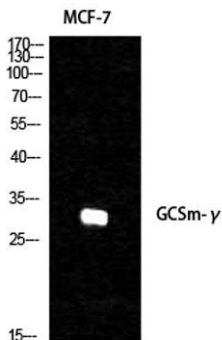
For research use only. Not intended for diagnostic use.

Product Name	GCSm- γ rabbit pAb
Host species	Rabbit
Applications	WB;IHC;IF;ELISA
Species Cross-Reactivity	Human;Mouse;Rat;Monkey
Recommended dilutions	Western Blot: 1/500 - 1/2000. Immunohistochemistry: 1/100 - 1/300. ELISA: 1/10000. Not yet tested in other applications.
Immunogen	The antiserum was produced against synthesized peptide derived from human GCSm-gamma. AA range:42-91
Specificity	GCSm- γ Polyclonal Antibody detects endogenous levels of GCSm- γ protein.
Formulation	Liquid in PBS containing 50% glycerol, 0.5% BSA and 0.02% sodium azide..
Storage	Store at -20°C. Avoid repeated freeze-thaw cycles.
Protein Name	Glutamate--cysteine ligase regulatory subunit
Gene Name	GCLM
Cellular localization	cytosol,glutamate-cysteine ligase complex,
Purification	The antibody was affinity-purified from rabbit antiserum by affinity-chromatography using epitope-specific immunogen.
Clonality	Polyclonal

Concentration	1 mg/ml
Observed band	31kD
Human Gene ID	2730
Human Swiss-Prot Number	P48507
Alternative Names	GCLM; GLCLR; Glutamate--cysteine ligase regulatory subunit; GCS light chain; Gamma-ECS regulatory subunit; Gamma-glutamylcysteine synthetase regulatory subunit; Glutamate--cysteine ligase modifier subunit

Background

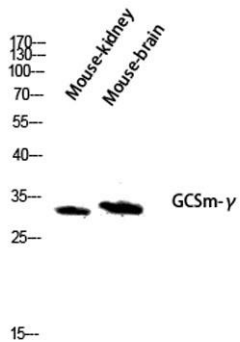
Glutamate-cysteine ligase, also known as gamma-glutamylcysteine synthetase, is the first rate limiting enzyme of glutathione synthesis. The enzyme consists of two subunits, a heavy catalytic subunit and a light regulatory subunit. Gamma glutamylcysteine synthetase deficiency has been implicated in some forms of hemolytic anemia. Alternative splicing results in multiple transcript variants encoding different isoforms. [provided by RefSeq, Apr 2015],



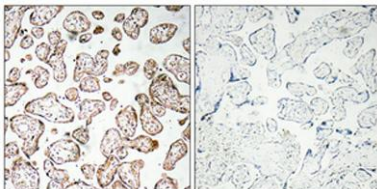
Western Blot analysis of various cells using GCSm- γ Polyclonal Antibody diluted at 1:1000



Western Blot analysis of COS7 cells using GCSm- γ Polyclonal Antibody diluted at 1:1000



Western blot analysis of Mouse-kidney mouse-brain lysis using GCSm- γ antibody. Antibody was diluted at 1:1000



Immunohistochemical analysis of paraffin-embedded Human placenta. Antibody was diluted at 1:100(4° overnight). High-pressure and temperature Tris-EDTA,pH8.0 was used for antigen retrieval. Negative contrl (right) obtained from antibody was pre-absorbed by immunogen peptide.