

**GCP6 rabbit pAb****Cat#: orb765288 (Manual)**

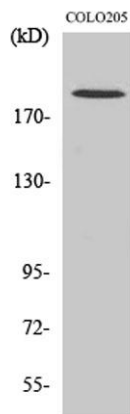
For research use only. Not intended for diagnostic use.

<b>Product Name</b>	GCP6 rabbit pAb
<b>Host species</b>	Rabbit
<b>Applications</b>	WB;IHC;IF;ELISA
<b>Species Cross-Reactivity</b>	Human;Rat;Mouse;
<b>Recommended dilutions</b>	Western Blot: 1/500 - 1/2000. Immunohistochemistry: 1/100 - 1/300. ELISA: 1/20000. Not yet tested in other applications.
<b>Immunogen</b>	The antiserum was produced against synthesized peptide derived from human TUBGCP6. AA range:741-790
<b>Specificity</b>	GCP6 Polyclonal Antibody detects endogenous levels of GCP6 protein.
<b>Formulation</b>	Liquid in PBS containing 50% glycerol, 0.5% BSA and 0.02% sodium azide..
<b>Storage</b>	Store at -20°C. Avoid repeated freeze-thaw cycles.
<b>Protein Name</b>	Gamma-tubulin complex component 6
<b>Gene Name</b>	TUBGCP6
<b>Cellular localization</b>	Cytoplasm, cytoskeleton, microtubule organizing center, centrosome .
<b>Purification</b>	The antibody was affinity-purified from rabbit antiserum by affinity-chromatography using epitope-specific immunogen.
<b>Clonality</b>	Polyclonal

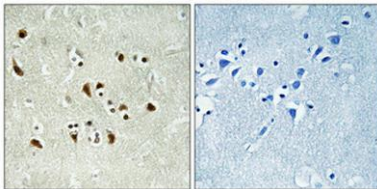
<b>Concentration</b>	1 mg/ml
<b>Observed band</b>	200kD
<b>Human Gene ID</b>	85378
<b>Human Swiss-Prot Number</b>	Q96RT7
<b>Alternative Names</b>	TUBGCP6; GCP6; KIAA1669; Gamma-tubulin complex component 6; GCP-6

## Background

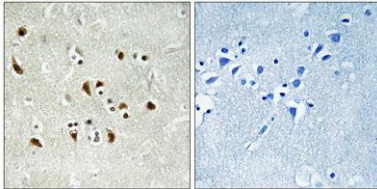
The protein encoded by this gene is part of a large multisubunit complex required for microtubule nucleation at the centrosome. [provided by RefSeq, Jul 2008],



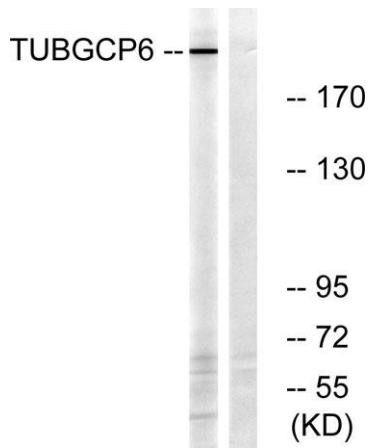
Western Blot analysis of various cells using GCP6 Polyclonal Antibody diluted at 1:1000



Immunohistochemical analysis of paraffin-embedded Human brain. Antibody was diluted at 1:100(4° overnight). High-pressure and temperature Tris-EDTA,pH8.0 was used for antigen retrieval. Negative ctrl (right) obtained from antibody was pre-absorbed by immunogen peptide.



Immunohistochemistry analysis of paraffin-embedded human brain tissue, using TUBGCP6 Antibody. The picture on the right is blocked with the synthesized peptide.



Western blot analysis of lysates from COLO cells, using TUBGCP6 Antibody. The lane on the right is blocked with the synthesized peptide.