

**GCN5 rabbit pAb****Cat#: orb765284 (Manual)**

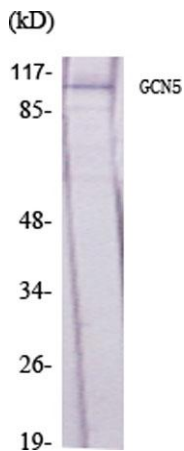
For research use only. Not intended for diagnostic use.

<b>Product Name</b>	GCN5 rabbit pAb
<b>Host species</b>	Rabbit
<b>Applications</b>	WB;IHC;IF;ELISA
<b>Species Cross-Reactivity</b>	Human;Mouse
<b>Recommended dilutions</b>	Western Blot: 1/500 - 1/2000. Immunohistochemistry: 1/100 - 1/300. ELISA: 1/20000. Not yet tested in other applications.
<b>Immunogen</b>	The antiserum was produced against synthesized peptide derived from human GCN5L2. AA range:691-740
<b>Specificity</b>	GCN5 Polyclonal Antibody detects endogenous levels of GCN5 protein.
<b>Formulation</b>	Liquid in PBS containing 50% glycerol, 0.5% BSA and 0.02% sodium azide..
<b>Storage</b>	Store at -20°C. Avoid repeated freeze-thaw cycles.
<b>Protein Name</b>	Histone acetyltransferase KAT2A
<b>Gene Name</b>	KAT2A
<b>Cellular localization</b>	Nucleus . Chromosome . Cytoplasm, cytoskeleton, microtubule organizing center, centrosome . Mainly localizes to the nucleus (PubMed:27796307). Also localizes to centrosomes in late G1 and around the G1/S transition, coinciding with the onset of centriole formation (PubMed:27796307). .
<b>Purification</b>	The antibody was affinity-purified from rabbit antiserum by affinity-chromatography using epitope-specific immunogen.

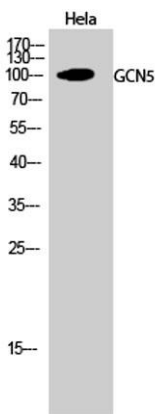
<b>Clonality</b>	Polyclonal
<b>Concentration</b>	1 mg/ml
<b>Observed band</b>	100kD
<b>Human Gene ID</b>	2648
<b>Human Swiss-Prot Number</b>	Q92830
<b>Alternative Names</b>	KAT2A; GCN5; GCN5L2; HGCN5; Histone acetyltransferase KAT2A; General control of amino acid synthesis protein 5-like 2; Histone acetyltransferase GCN5; HsGCN5; Lysine acetyltransferase 2A; STAF97

**Background**

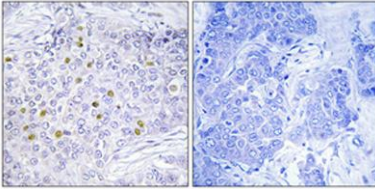
KAT2A, or GCN5, is a histone acetyltransferase (HAT) that functions primarily as a transcriptional activator. It also functions as a repressor of NF-kappa-B (see MIM 164011) by promoting ubiquitination of the NF-kappa-B subunit RELA (MIM 164014) in a HAT-independent manner (Mao et al., 2009 [PubMed 19339690]).[supplied by OMIM, Sep 2009],



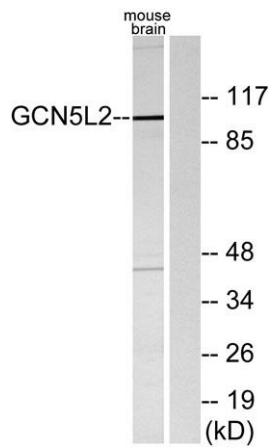
**Western Blot analysis of various cells using GCN5 Polyclonal Antibody diluted at 1:1000 cells nucleus extracted by Minute™ Cytoplasmic and Nuclear Fractionation kit (SC-003, Invent biotech, MN, USA).**



**Western Blot analysis of HeLa cells using GCN5 Polyclonal Antibody diluted at 1:1000 cells nucleus extracted by Minute™ Cytoplasmic and Nuclear Fractionation kit (SC-003, Invent biotech, MN, USA).**



**Immunohistochemical analysis of paraffin-embedded Human breast cancer. Antibody was diluted at 1:100(4° overnight). High-pressure and temperature Tris-EDTA,pH8.0 was used for antigen retrieval. Negative contrl (right) obtained from antibody was pre-absorbed by immunogen peptide.**



**Western blot analysis of lysates from mouse brain, using GCN5L2 Antibody. The lane on the right is blocked with the synthesized peptide.**