

Gads rabbit pAb**Cat#: orb765267 (Manual)**

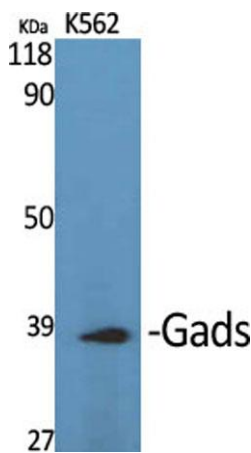
For research use only. Not intended for diagnostic use.

Product Name	Gads rabbit pAb
Host species	Rabbit
Applications	WB;ELISA
Species Cross-Reactivity	Human;Rat;Mouse;
Recommended dilutions	Western Blot: 1/500 - 1/2000. ELISA: 1/40000. Not yet tested in other applications.
Immunogen	The antiserum was produced against synthesized peptide derived from human GRAP2. AA range:121-170
Specificity	Gads Polyclonal Antibody detects endogenous levels of Gads protein.
Formulation	Liquid in PBS containing 50% glycerol, 0.5% BSA and 0.02% sodium azide..
Storage	Store at -20°C. Avoid repeated freeze-thaw cycles.
Protein Name	GRB2-related adapter protein 2
Gene Name	GRAP2
Cellular localization	Nucleus . Cytoplasm . Endosome .
Purification	The antibody was affinity-purified from rabbit antiserum by affinity-chromatography using epitope-specific immunogen.
Clonality	Polyclonal

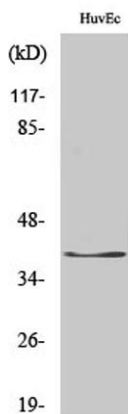
Concentration	1 mg/ml
Observed band	38kD
Human Gene ID	9402
Human Swiss-Prot Number	O75791
Alternative Names	GRAP2; GADS; GRB2L; GRID; GRB2-related adapter protein 2; Adapter protein GRID; GRB-2-like protein; GRB2L; GRBLG; GRBX; Grf40 adapter protein; Grf-40; Growth factor receptor-binding protein; Hematopoietic cell-associated adapter protein Grp

Background

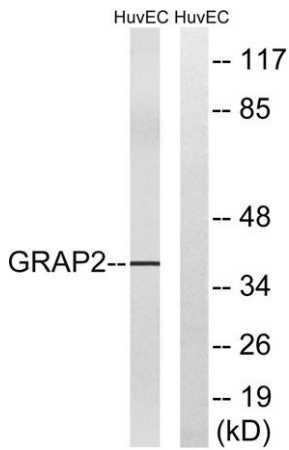
This gene encodes a member of the GRB2/Sem5/Drk family. This member is an adaptor-like protein involved in leukocyte-specific protein-tyrosine kinase signaling. Like its related family member, GRB2-related adaptor protein (GRAP), this protein contains an SH2 domain flanked by two SH3 domains. This protein interacts with other proteins, such as GRB2-associated binding protein 1 (GAB1) and the SLP-76 leukocyte protein (LCP2), through its SH3 domains. Multiple alternatively spliced transcript variants encoding distinct isoforms have been found for this gene. [provided by RefSeq, Apr 2014],



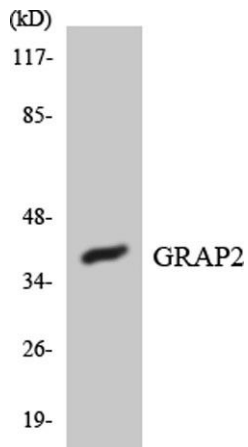
Western Blot analysis of various cells using Gads Polyclonal Antibody



Western Blot analysis of HuvEc cells using Gads Polyclonal Antibody



Western blot analysis of lysates from HUVEC cells, using GRAP2 Antibody. The lane on the right is blocked with the synthesized peptide.



Western blot analysis of the lysates from HUVEC cells using GRAP2 antibody.