

FRP-2 rabbit pAb**Cat#: orb765250 (Manual)**

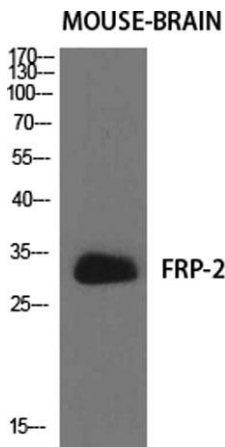
For research use only. Not intended for diagnostic use.

Product Name	FRP-2 rabbit pAb
Host species	Rabbit
Applications	WB;ELISA
Species Cross-Reactivity	Human;Mouse;Rat
Recommended dilutions	Western Blot: 1/500 - 1/2000. ELISA: 1/5000. Not yet tested in other applications.
Immunogen	The antiserum was produced against synthesized peptide derived from human SFRP2. AA range:119-168
Specificity	FRP-2 Polyclonal Antibody detects endogenous levels of FRP-2 protein.
Formulation	Liquid in PBS containing 50% glycerol, 0.5% BSA and 0.02% sodium azide..
Storage	Store at -20°C. Avoid repeated freeze-thaw cycles.
Protein Name	Secreted frizzled-related protein 2
Gene Name	SFRP2
Cellular localization	Secreted .
Purification	The antibody was affinity-purified from rabbit antiserum by affinity-chromatography using epitope-specific immunogen.
Clonality	Polyclonal

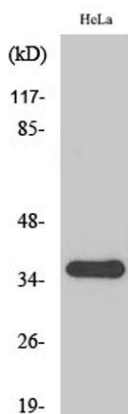
Concentration	1 mg/ml
Observed band	30kD
Human Gene ID	6423
Human Swiss-Prot Number	Q96HF1
Alternative Names	SFRP2; FRP2; SARP1; FKSG12; Secreted frizzled-related protein 2; FRP-2; sFRP-2; Secreted apoptosis-related protein 1; SARP-1

Background

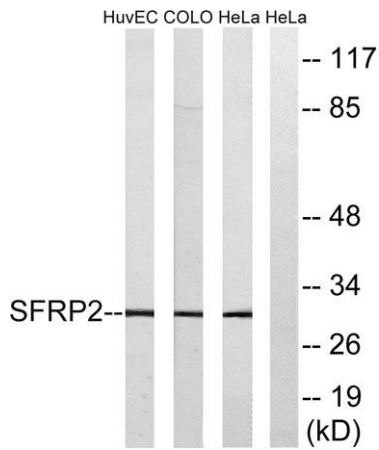
This gene encodes a member of the SFRP family that contains a cysteine-rich domain homologous to the putative Wnt-binding site of Frizzled proteins. SFRPs act as soluble modulators of Wnt signaling. Methylation of this gene is a potential marker for the presence of colorectal cancer. [provided by RefSeq, Jul 2008],



Western Blot analysis of various cells using FRP-2 Polyclonal Antibody diluted at 1:500



Western Blot analysis of HuvEc cells using FRP-2 Polyclonal Antibody diluted at 1:500



Western blot analysis of lysates from HeLa, COLO, and HUVEC cells, using SFRP2 Antibody. The lane on the right is blocked with the synthesized peptide.