

Frizzled-1 rabbit pAb**Cat#: orb765246 (Manual)**

For research use only. Not intended for diagnostic use.

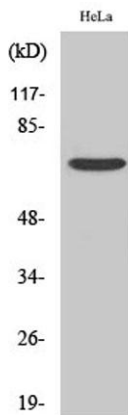
Product Name	Frizzled-1 rabbit pAb
Host species	Rabbit
Applications	WB;IF;ELISA
Species Cross-Reactivity	Human;Rat;Mouse;;Rice
Recommended dilutions	Western Blot: 1/500 - 1/2000. Immunofluorescence: 1/200 - 1/1000. ELISA: 1/5000. Not yet tested in other applications.
Immunogen	The antiserum was produced against synthesized peptide derived from human FZD1. AA range:15-64
Specificity	Frizzled-1 Polyclonal Antibody detects endogenous levels of Frizzled-1 protein.
Formulation	Liquid in PBS containing 50% glycerol, 0.5% BSA and 0.02% sodium azide..
Storage	Store at -20°C. Avoid repeated freeze-thaw cycles.
Protein Name	Frizzled-1
Gene Name	FZD1
Cellular localization	Cell membrane ; Multi-pass membrane protein .
Purification	The antibody was affinity-purified from rabbit antiserum by affinity-chromatography using epitope-specific immunogen.
Clonality	Polyclonal

Explore. Bioreagents.

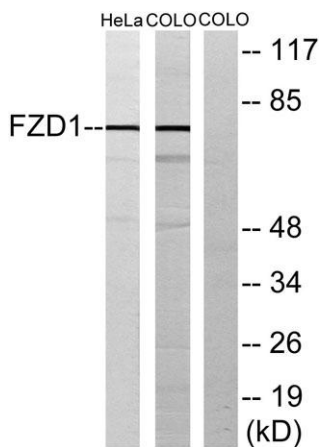
Concentration	1 mg/ml
Observed band	71kD
Human Gene ID	8321
Human Swiss-Prot Number	Q9UP38
Alternative Names	FZD1; Frizzled-1; Fz-1; hFz1; FzE1

Background

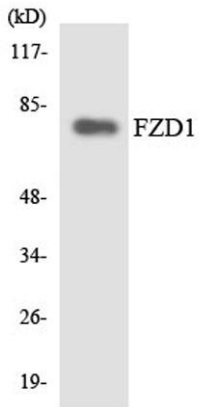
frizzled class receptor 1(FZD1) Homo sapiens Members of the 'frizzled' gene family encode 7-transmembrane domain proteins that are receptors for Wnt signaling proteins. The FZD1 protein contains a signal peptide, a cysteine-rich domain in the N-terminal extracellular region, 7 transmembrane domains, and a C-terminal PDZ domain-binding motif. The FZD1 transcript is expressed in various tissues. [provided by RefSeq, Jul 2008],



Western Blot analysis of various cells using Frizzled-1 Polyclonal Antibody



Western blot analysis of lysates from HeLa and COLO205 cells, using FZD1 Antibody. The lane on the right is blocked with the synthesized peptide.



Western blot analysis of the lysates from HT-29 cells using FZD1 antibody.