

**FoxR1 rabbit pAb****Cat#: orb765244 (Manual)**

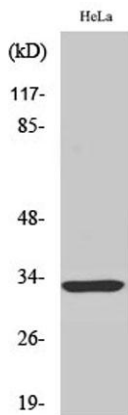
For research use only. Not intended for diagnostic use.

<b>Product Name</b>	FoxR1 rabbit pAb
<b>Host species</b>	Rabbit
<b>Applications</b>	WB;IHC;IF;ELISA
<b>Species Cross-Reactivity</b>	Human;Mouse
<b>Recommended dilutions</b>	Western Blot: 1/500 - 1/2000. Immunohistochemistry: 1/100 - 1/300. ELISA: 1/20000. Not yet tested in other applications.
<b>Immunogen</b>	The antiserum was produced against synthesized peptide derived from human FOXR1. AA range:231-280
<b>Specificity</b>	FoxR1 Polyclonal Antibody detects endogenous levels of FoxR1 protein.
<b>Formulation</b>	Liquid in PBS containing 50% glycerol, 0.5% BSA and 0.02% sodium azide..
<b>Storage</b>	Store at -20°C. Avoid repeated freeze-thaw cycles.
<b>Protein Name</b>	Forkhead box protein R1
<b>Gene Name</b>	FOXR1
<b>Cellular localization</b>	Cytoplasm . Cytoplasm, perinuclear region . Located in the cytoplasm of spermatocytes and strongly accumulates at the perinuclear region in elongated spermatids. .
<b>Purification</b>	The antibody was affinity-purified from rabbit antiserum by affinity-chromatography using epitope-specific immunogen.

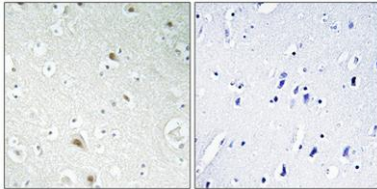
<b>Clonality</b>	Polyclonal
<b>Concentration</b>	1 mg/ml
<b>Observed band</b>	35kD
<b>Human Gene ID</b>	283150
<b>Human Swiss-Prot Number</b>	Q6PIV2
<b>Alternative Names</b>	FOXR1; FOXN5; DLNB13; Forkhead box protein R1; Forkhead box protein N5

## Background

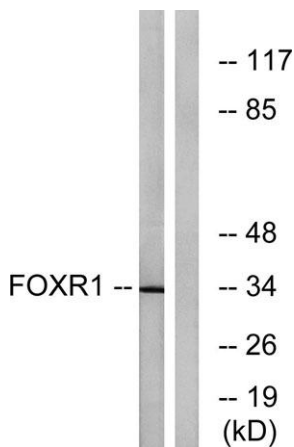
This gene encodes a member of the forkhead box (FOX) family of transcription factors. FOX family members are monomeric, helix-turn-helix proteins with a core DNA-binding domain of approximately 110 aa. Many FOX transcription factors play roles in determining cell fates during early development. This forkhead box protein lacks the C-terminal basic region found in many other FOX family members. It is located within the 11q23.3 region which is commonly deleted in neuroblastomas. [provided by RefSeq, Jul 2008],



**Western Blot analysis of various cells using FoxR1 Polyclonal Antibody cells nucleus extracted by Minute TM Cytoplasmic and Nuclear Fractionation kit (SC-003, Invent biotech, MN, USA).**



**Immunohistochemical analysis of paraffin-embedded Human brain. Antibody was diluted at 1:100(4° overnight). High-pressure and temperature Tris-EDTA,pH8.0 was used for antigen retrieval. Negative contrl (right) obtained from antibody was pre-absorbed by i**



**Western blot analysis of lysates from HeLa cells, using FOXR1 Antibody. The lane on the right is blocked with the synthesized peptide.**