

Flt3-L rabbit pAb**Cat#: orb765229 (Manual)**

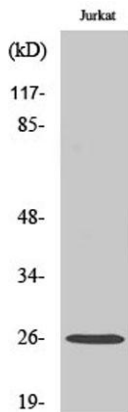
For research use only. Not intended for diagnostic use.

Product Name	Flt3-L rabbit pAb
Host species	Rabbit
Applications	WB;IHC;IF;ELISA
Species Cross-Reactivity	Human;Rat;Mouse;
Recommended dilutions	Western Blot: 1/500 - 1/2000. Immunohistochemistry: 1/100 - 1/300. ELISA: 1/20000. Not yet tested in other applications.
Immunogen	The antiserum was produced against synthesized peptide derived from human Flt3 ligand. AA range: 171-220
Specificity	Flt3-L Polyclonal Antibody detects endogenous levels of Flt3-L protein.
Formulation	Liquid in PBS containing 50% glycerol, 0.5% BSA and 0.02% sodium azide..
Storage	Store at -20°C. Avoid repeated freeze-thaw cycles.
Protein Name	Fms-related tyrosine kinase 3 ligand
Gene Name	FLT3LG
Cellular localization	[Isoform 1]: Cell membrane; Single-pass type I membrane protein.; [Isoform 2]: Secreted.
Purification	The antibody was affinity-purified from rabbit antiserum by affinity-chromatography using epitope-specific immunogen.
Clonality	Polyclonal

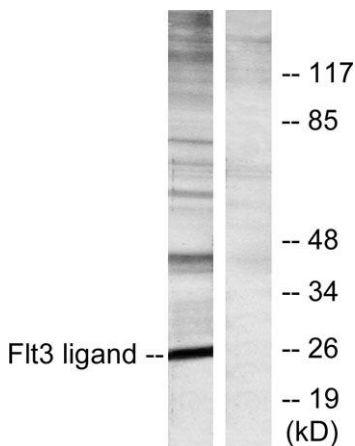
Concentration	1 mg/ml
Observed band	26kD
Human Gene ID	2323
Human Swiss-Prot Number	P49771
Alternative Names	FLT3LG; Fms-related tyrosine kinase 3 ligand; Flt3 ligand; Flt3L; SL cytokine

Background

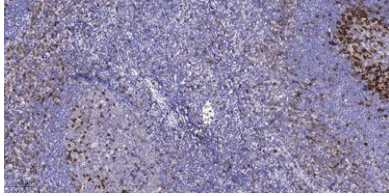
Dendritic cells (DCs) provide the key link between innate and adaptive immunity by recognizing pathogens and priming pathogen-specific immune responses. FLT3LG controls the development of DCs and is particularly important for plasmacytoid DCs and CD8 (see MIM 186910)-positive classical DCs and their CD103 (ITGAE; MIM 604682)-positive tissue counterparts (summary by Sathaliyawala et al., 2010 [PubMed 20933441]).[supplied by OMIM, Jan 2011],



Western Blot analysis of various cells using Flt3-L Polyclonal Antibody



Western blot analysis of lysates from Jurkat cells, using Flt3 ligand Antibody. The lane on the right is blocked with the synthesized peptide.



Immunohistochemical analysis of paraffin-embedded human tonsil. 1, Antibody was diluted at 1:200(4° overnight). 2, Tris-EDTA,pH9.0 was used for antigen retrieval. 3,Secondary antibody was diluted at 1:200(room temperature, 45min).