

**Flotillin-2 rabbit pAb****Cat#: orb765228 (Manual)**

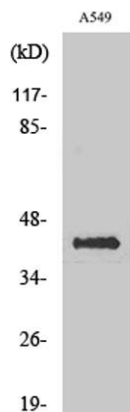
For research use only. Not intended for diagnostic use.

<b>Product Name</b>	Flotillin-2 rabbit pAb
<b>Host species</b>	Rabbit
<b>Applications</b>	WB;ELISA
<b>Species Cross-Reactivity</b>	Human;Mouse;Rat
<b>Recommended dilutions</b>	Western Blot: 1/500 - 1/2000. ELISA: 1/10000. Not yet tested in other applications.
<b>Immunogen</b>	The antiserum was produced against synthesized peptide derived from human Flotillin-2. AA range:95-144
<b>Specificity</b>	Flotillin-2 Polyclonal Antibody detects endogenous levels of Flotillin-2 protein.
<b>Formulation</b>	Liquid in PBS containing 50% glycerol, 0.5% BSA and 0.02% sodium azide..
<b>Storage</b>	Store at -20°C. Avoid repeated freeze-thaw cycles.
<b>Protein Name</b>	Flotillin-2
<b>Gene Name</b>	FLOT2
<b>Cellular localization</b>	Cell membrane ; Peripheral membrane protein . Membrane, caveola ; Peripheral membrane protein . Endosome . Membrane ; Lipid-anchor . Membrane-associated protein of caveolae.
<b>Purification</b>	The antibody was affinity-purified from rabbit antiserum by affinity-chromatography using epitope-specific immunogen.

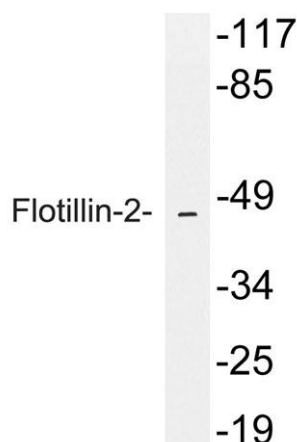
<b>Clonality</b>	Polyclonal
<b>Concentration</b>	1 mg/ml
<b>Observed band</b>	46kD
<b>Human Gene ID</b>	2319
<b>Human Swiss-Prot Number</b>	Q14254
<b>Alternative Names</b>	FLOT2; ESA1; M17S1; Flotillin-2; Epidermal surface antigen; ESA; Membrane component chromosome 17 surface marker 1

## Background

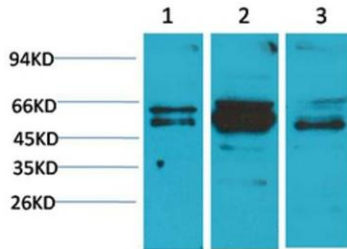
Caveolae are small domains on the inner cell membrane involved in vesicular trafficking and signal transduction. This gene encodes a caveolae-associated, integral membrane protein, which is thought to function in neuronal signaling. [provided by RefSeq, Jul 2008],



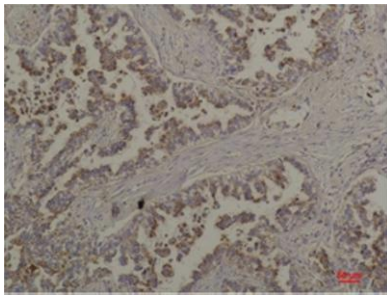
Western Blot analysis of various cells using Flotillin-2 Polyclonal Antibody



Western blot analysis of lysate from A549 cells, using Flotillin-2 antibody.



Western blot analysis of 1) A431, 2) Mouse Brain Tissue, 3) Rat Brain Tissue with Flotillin-2 Rabbit pAb diluted at 1:2,000.



Immunohistochemical analysis of paraffin-embedded Human Lung Carcinoma using Flotillin-2 Rabbit pAb diluted at 1:200