

Fliz1 rabbit pAb**Cat#: orb765225 (Manual)**

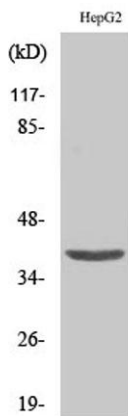
For research use only. Not intended for diagnostic use.

Product Name	Fliz1 rabbit pAb
Host species	Rabbit
Applications	WB;IHC;IF;ELISA
Species Cross-Reactivity	Human;Rat;Mouse;
Recommended dilutions	Western Blot: 1/500 - 1/2000. Immunohistochemistry: 1/100 - 1/300. ELISA: 1/40000. Not yet tested in other applications.
Immunogen	The antiserum was produced against synthesized peptide derived from human ZC3H8. AA range:81-130
Specificity	Fliz1 Polyclonal Antibody detects endogenous levels of Fliz1 protein.
Formulation	Liquid in PBS containing 50% glycerol, 0.5% BSA and 0.02% sodium azide..
Storage	Store at -20°C. Avoid repeated freeze-thaw cycles.
Protein Name	Zinc finger CCCH domain-containing protein 8
Gene Name	ZC3H8
Cellular localization	Nucleus . Colocalizes with coilin in subnuclear cajal and histone locus bodies. Translocates in the LEC complex to cajal and histone locus bodies at snRNA genes in a ICE1-dependent manner. Associates to transcriptionally active chromatin at snRNA genes.
Purification	The antibody was affinity-purified from rabbit antiserum by affinity-chromatography using epitope-specific immunogen.

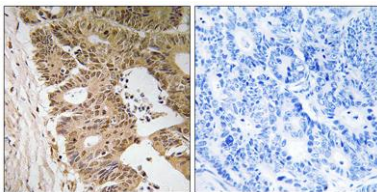
Clonality	Polyclonal
Concentration	1 mg/ml
Observed band	40kD
Human Gene ID	84524
Human Swiss-Prot Number	Q8N5P1
Alternative Names	ZC3H8; ZC3HDC8; Zinc finger CCCH domain-containing protein 8

Background

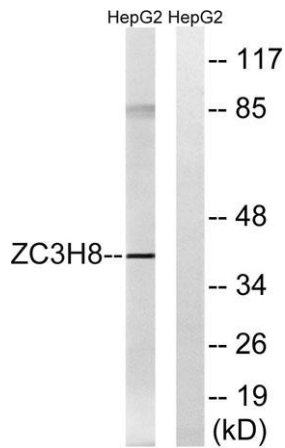
PTM:Phosphorylated upon DNA damage, probably by ATM or ATR.,similarity:Contains 3 C3H1-type zinc fingers.,



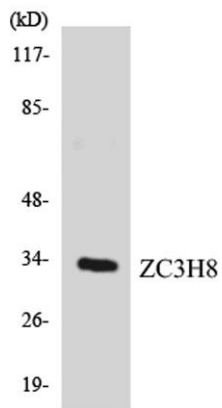
Western Blot analysis of various cells using Fliz1 Polyclonal Antibody cells nucleus extracted by Minute TM Cytoplasmic and Nuclear Fractionation kit (SC-003, Invent biotech, MN, USA).



Immunohistochemistry analysis of paraffin-embedded human colon carcinoma tissue, using ZC3H8 Antibody. The picture on the right is blocked with the synthesized peptide.



Western blot analysis of lysates from HepG2 cells, using ZC3H8 Antibody. The lane on the right is blocked with the synthesized peptide.



Western blot analysis of the lysates from COLO205 cells using ZC3H8 antibody.