

**FASTKD1 rabbit pAb****Cat#: orb765205 (Manual)**

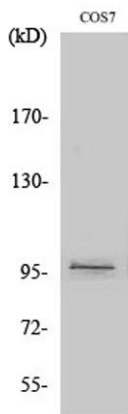
For research use only. Not intended for diagnostic use.

<b>Product Name</b>	FASTKD1 rabbit pAb
<b>Host species</b>	Rabbit
<b>Applications</b>	WB;ELISA
<b>Species Cross-Reactivity</b>	Human;Mouse;Monkey
<b>Recommended dilutions</b>	Western Blot: 1/500 - 1/2000. ELISA: 1/10000. Not yet tested in other applications.
<b>Immunogen</b>	The antiserum was produced against synthesized peptide derived from human FAKD1. AA range:561-610
<b>Specificity</b>	FASTKD1 Polyclonal Antibody detects endogenous levels of FASTKD1 protein.
<b>Formulation</b>	Liquid in PBS containing 50% glycerol, 0.5% BSA and 0.02% sodium azide..
<b>Storage</b>	Store at -20°C. Avoid repeated freeze-thaw cycles.
<b>Protein Name</b>	FAST kinase domain-containing protein 1
<b>Gene Name</b>	FASTKD1
<b>Cellular localization</b>	Mitochondrion . Preferentially localizes to mitochondrial RNA granules, platforms for post-transcriptional RNA modification and ribosome assembly (PubMed:28335001). .
<b>Purification</b>	The antibody was affinity-purified from rabbit antiserum by affinity-chromatography using epitope-specific immunogen.

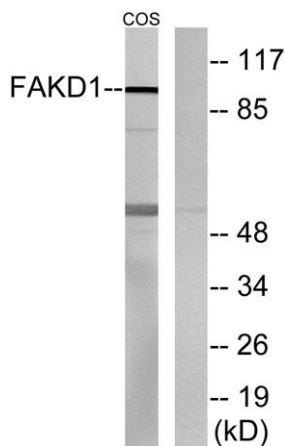
<b>Clonality</b>	Polyclonal
<b>Concentration</b>	1 mg/ml
<b>Observed band</b>	97kD
<b>Human Gene ID</b>	79675
<b>Human Swiss-Prot Number</b>	Q53R41
<b>Alternative Names</b>	FASTKD1; KIAA1800; FAST kinase domain-containing protein 1

## Background

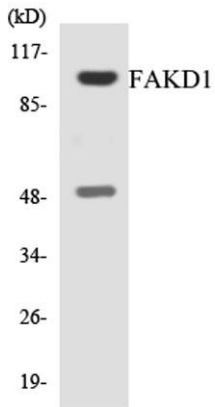
caution:It is uncertain whether Met-1 or Met-15 is the initiator.,similarity:Belongs to the FAST kinase family.,similarity:Contains 1 RAP domain.,



Western Blot analysis of various cells using FASTKD1 Polyclonal Antibody



Western blot analysis of lysates from COS7 cells, using FAKD1 Antibody. The lane on the right is blocked with the synthesized peptide.



Western blot analysis of the lysates from HT-29 cells using FAKD1 antibody.