

ERdj3 rabbit pAb**Cat#: orb765168 (Manual)**

For research use only. Not intended for diagnostic use.

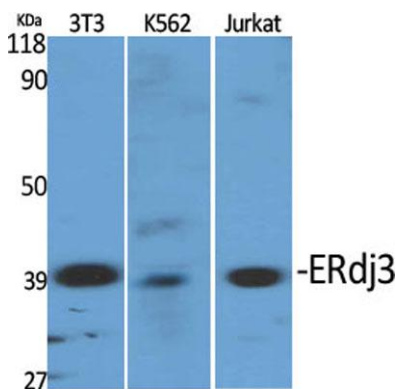
Product Name	ERdj3 rabbit pAb
Host species	Rabbit
Applications	WB;IHC;IF;ELISA
Species Cross-Reactivity	Human;Mouse;Rat
Recommended dilutions	Western Blot: 1/500 - 1/2000. Immunohistochemistry: 1/100 - 1/300. ELISA: 1/20000. Not yet tested in other applications.
Immunogen	The antiserum was produced against synthesized peptide derived from human DNAJB11. AA range:31-80
Specificity	ERdj3 Polyclonal Antibody detects endogenous levels of ERdj3 protein.
Formulation	Liquid in PBS containing 50% glycerol, 0.5% BSA and 0.02% sodium azide..
Storage	Store at -20°C. Avoid repeated freeze-thaw cycles.
Protein Name	DnaJ homolog subfamily B member 11
Gene Name	DNAJB11
Cellular localization	Endoplasmic reticulum lumen . Associated with the ER membrane in a C-terminally epitope-tagged construct.
Purification	The antibody was affinity-purified from rabbit antiserum by affinity-chromatography using epitope-specific immunogen.
Clonality	Polyclonal

Explore. Bioreagents.

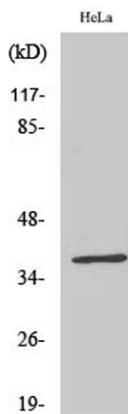
Concentration	1 mg/ml
Observed band	40kD
Human Gene ID	51726
Human Swiss-Prot Number	Q9UBS4
Alternative Names	DNAJB11; EDJ; ERJ3; HDJ9; PSEC0121; DnaJ homolog subfamily B member 11; APOBEC1-binding protein 2; ABBP-2; DnaJ protein homolog 9; ER-associated DNAJ; ER-associated Hsp40 co-chaperone; ER-associated dnaJ protein 3; ERdj3; ERj3p; HEDJ; Human

Background

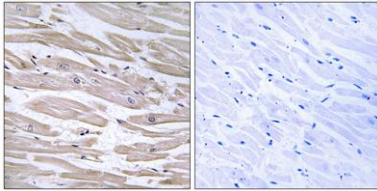
This gene encodes a soluble glycoprotein of the endoplasmic reticulum (ER) lumen that functions as a co-chaperone of binding immunoglobulin protein, a 70 kilodalton heat shock protein chaperone required for the proper folding and assembly of proteins in the ER. The encoded protein contains a highly conserved J domain of about 70 amino acids with a characteristic His-Pro-Asp (HPD) motif and may regulate the activity of binding immunoglobulin protein by stimulating ATPase activity. [provided by RefSeq, Mar 2014],



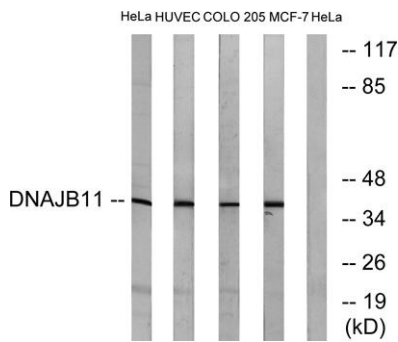
Western Blot analysis of various cells using ERdj3 Polyclonal Antibody diluted at 1:2000



Western Blot analysis of MCF7 cells using ERdj3 Polyclonal Antibody diluted at 1:2000



Immunohistochemistry analysis of paraffin-embedded human heart tissue, using DNAJB11 Antibody. The picture on the right is blocked with the synthesized peptide.



Western blot analysis of lysates from HeLa, HUVEC, COLO, and MCF-7 cells, using DNAJB11 Antibody. The lane on the right is blocked with the synthesized peptide.