

Ephrin-B1/2 rabbit pAb**Cat#: orb765156 (Manual)**

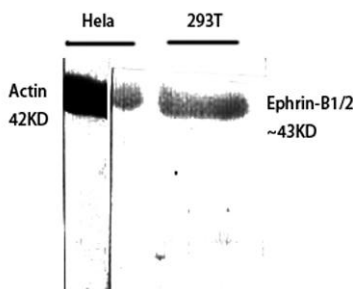
For research use only. Not intended for diagnostic use.

Product Name	Ephrin-B1/2 rabbit pAb
Host species	Rabbit
Applications	WB;IHC;IF;ELISA
Species Cross-Reactivity	Human;Mouse;Rat
Recommended dilutions	Western Blot: 1/500 - 1/2000. Immunohistochemistry: 1/100 - 1/300. ELISA: 1/40000. Not yet tested in other applications.
Immunogen	The antiserum was produced against synthesized peptide derived from human EFNB1/2. AA range:284-333
Specificity	Ephrin-B1/2 Polyclonal Antibody detects endogenous levels of Ephrin-B1/2 protein.
Formulation	Liquid in PBS containing 50% glycerol, 0.5% BSA and 0.02% sodium azide..
Storage	Store at -20°C. Avoid repeated freeze-thaw cycles.
Protein Name	Ephrin-B1/2
Gene Name	EFNB1/EFNB2
Cellular localization	Cell membrane ; Single-pass type I membrane protein . Membrane raft . May recruit GRIP1 and GRIP2 to membrane raft domains. . ; [Ephrin-B1 C-terminal fragment]: Cell membrane ; Single-pass type I membrane protein . ; [Ephrin-B1 intracellular domain]: Nucleus . Colocalizes with ZHX2 in the nucleus. .
Purification	The antibody was affinity-purified from rabbit antiserum by affinity-chromatography using epitope-specific immunogen.

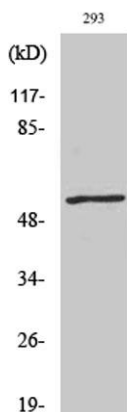
Clonality	Polyclonal
Concentration	1 mg/ml
Observed band	59kD
Human Gene ID	1947/1948
Human Swiss-Prot Number	P98172/P52799
Alternative Names	EFNB1; EFL3; EPLG2; LERK2; Ephrin-B1; EFL-3; ELK ligand; ELK-L; EPH-related receptor tyrosine kinase ligand 2; LERK-2; EFNB2; EPLG5; HTKL; LERK5; Ephrin-B2; EPH-related receptor tyrosine kinase ligand 5; LERK-5; HTK ligand; HTK-L

Background

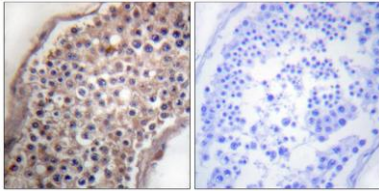
The protein encoded by this gene is a type I membrane protein and a ligand of Eph-related receptor tyrosine kinases. It may play a role in cell adhesion and function in the development or maintenance of the nervous system. [provided by RefSeq, Jul 2008],



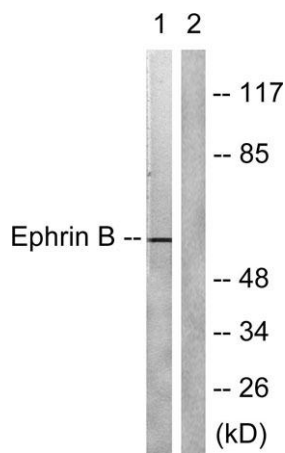
Western Blot analysis of various cells using Ephrin-B1/2 Polyclonal Antibody diluted at 1:500



Western Blot analysis of 293 cells using Ephrin-B1/2 Polyclonal Antibody diluted at 1:500



Immunohistochemistry analysis of paraffin-embedded human testis tissue, using EFNB1/2 Antibody. The picture on the right is blocked with the synthesized peptide.



Western blot analysis of lysates from 293 cells, treated with EGF 200ng/ml 5', using EFNB1/2 Antibody. The lane on the right is blocked with the synthesized peptide.