

Ephrin-A1 rabbit pAb**Cat#: orb765150 (Manual)**

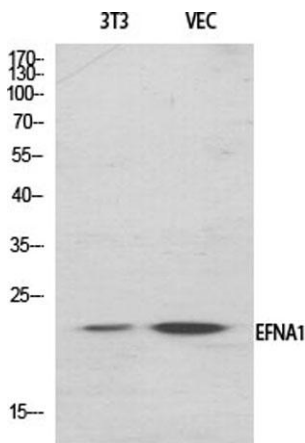
For research use only. Not intended for diagnostic use.

Product Name	Ephrin-A1 rabbit pAb
Host species	Rabbit
Applications	WB;IHC;IF;ELISA
Species Cross-Reactivity	Human;Mouse;Rat
Recommended dilutions	Western Blot: 1/500 - 1/2000. Immunohistochemistry: 1/100 - 1/300. Immunofluorescence: 1/200 - 1/1000. ELISA: 1/10000. Not yet tested in other applications.
Immunogen	The antiserum was produced against synthesized peptide derived from human EFNA1. AA range:66-115
Specificity	Ephrin-A1 Polyclonal Antibody detects endogenous levels of Ephrin-A1 protein.
Formulation	Liquid in PBS containing 50% glycerol, 0.5% BSA and 0.02% sodium azide..
Storage	Store at -20°C. Avoid repeated freeze-thaw cycles.
Protein Name	Ephrin-A1
Gene Name	EFNA1
Cellular localization	Cell membrane ; Lipid-anchor, GPI-anchor .; [Ephrin-A1, secreted form]: Secreted .
Purification	The antibody was affinity-purified from rabbit antiserum by affinity-chromatography using epitope-specific immunogen.
Clonality	Polyclonal

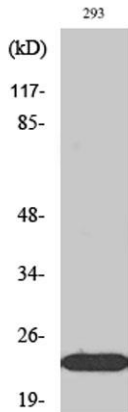
Concentration	1 mg/ml
Observed band	24kD
Human Gene ID	1942
Human Swiss-Prot Number	P20827
Alternative Names	EFNA1; EPLG1; LERK1; TNFAIP4; Ephrin-A1; EPH-related receptor tyrosine kinase ligand 1; LERK-1; Immediate early response protein B61; Tumor necrosis factor alpha-induced protein 4; TNF alpha-induced protein 4

Background

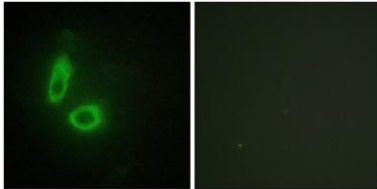
This gene encodes a member of the ephrin (EPH) family. The ephrins and EPH-related receptors comprise the largest subfamily of receptor protein-tyrosine kinases and have been implicated in mediating developmental events, especially in the nervous system and in erythropoiesis. Based on their structures and sequence relationships, ephrins are divided into the ephrin-A (EFNA) class, which are anchored to the membrane by a glycosylphosphatidylinositol linkage, and the ephrin-B (EFNB) class, which are transmembrane proteins. This gene encodes an EFNA class ephrin which binds to the EPHA2, EPHA4, EPHA5, EPHA6, and EPHA7 receptors. Two transcript variants that encode different isoforms were identified through sequence analysis. [provided by RefSeq, Jul 2008],



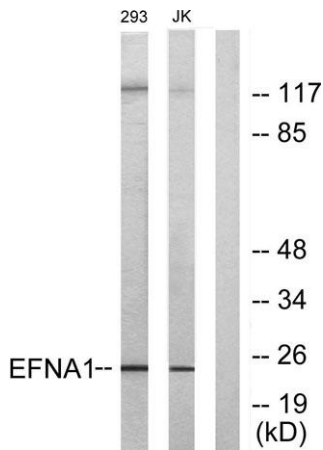
Western Blot analysis of various cells using Ephrin-A1 Polyclonal Antibody diluted at 1:2000



Western Blot analysis of Jurkat cells using Ephrin-A1 Polyclonal Antibody diluted at 1:2000



Immunofluorescence analysis of HeLa cells, using EFNA1 Antibody. The picture on the right is blocked with the synthesized peptide.



Western blot analysis of lysates from 293 and Jurkat cells, using EFNA1 Antibody. The lane on the right is blocked with the synthesized peptide.