

**EphA1 rabbit pAb****Cat#: orb765145 (Manual)**

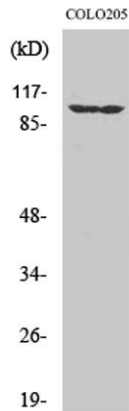
For research use only. Not intended for diagnostic use.

<b>Product Name</b>	EphA1 rabbit pAb
<b>Host species</b>	Rabbit
<b>Applications</b>	WB;IHC;IF;ELISA
<b>Species Cross-Reactivity</b>	Human;Rat;Mouse;
<b>Recommended dilutions</b>	Western Blot: 1/500 - 1/2000. Immunohistochemistry: 1/100 - 1/300. Immunofluorescence: 1/200 - 1/1000. ELISA: 1/20000. Not yet tested in other applications.
<b>Immunogen</b>	The antiserum was produced against synthesized peptide derived from human EPHA1. AA range:541-590
<b>Specificity</b>	EphA1 Polyclonal Antibody detects endogenous levels of EphA1 protein.
<b>Formulation</b>	Liquid in PBS containing 50% glycerol, 0.5% BSA and 0.02% sodium azide..
<b>Storage</b>	Store at -20°C. Avoid repeated freeze-thaw cycles.
<b>Protein Name</b>	Ephrin type-A receptor 1
<b>Gene Name</b>	EPHA1
<b>Cellular localization</b>	Cell membrane ; Single-pass type I membrane protein .
<b>Purification</b>	The antibody was affinity-purified from rabbit antiserum by affinity-chromatography using epitope-specific immunogen.
<b>Clonality</b>	Polyclonal

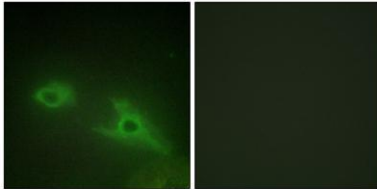
<b>Concentration</b>	1 mg/ml
<b>Observed band</b>	108kD
<b>Human Gene ID</b>	2041
<b>Human Swiss-Prot Number</b>	P21709
<b>Alternative Names</b>	EPHA1; EPH; EPHT; EPHT1; Ephrin type-A receptor 1; hEpha1; EPH tyrosine kinase; EPH tyrosine kinase 1; Erythropoietin-producing hepatoma receptor; Tyrosine-protein kinase receptor EPH

**Background**

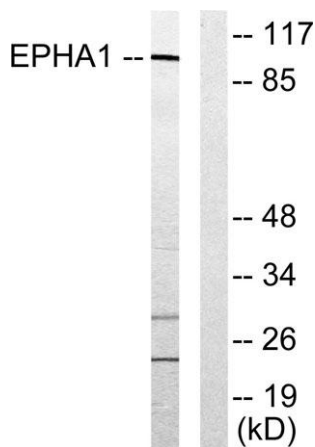
This gene belongs to the ephrin receptor subfamily of the protein-tyrosine kinase family. EPH and EPH-related receptors have been implicated in mediating developmental events, particularly in the nervous system. Receptors in the EPH subfamily typically have a single kinase domain and an extracellular region containing a Cys-rich domain and 2 fibronectin type III repeats. The ephrin receptors are divided into 2 groups based on the similarity of their extracellular domain sequences and their affinities for binding ephrin-A and ephrin-B ligands. This gene is expressed in some human cancer cell lines and has been implicated in carcinogenesis. [provided by RefSeq, Jul 2008],



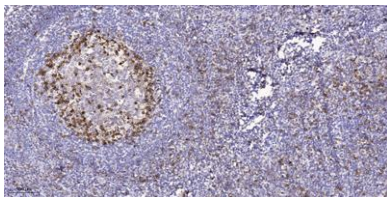
**Western Blot analysis of various cells using EphA1 Polyclonal Antibody**



**Immunofluorescence analysis of HeLa cells, using EPHA1 Antibody. The picture on the right is blocked with the synthesized peptide.**



**Western blot analysis of lysates from COLO205 cells, using EPHA1 Antibody. The lane on the right is blocked with the synthesized peptide.**



**Immunohistochemical analysis of paraffin-embedded human tonsil. 1, Antibody was diluted at 1:200(4° overnight). 2, Tris-EDTA,pH9.0 was used for antigen retrieval. 3,Secondary antibody was diluted at 1:200(room temperature, 45min).**