

**Endoplasmin rabbit pAb****Cat#: orb765138 (Manual)**

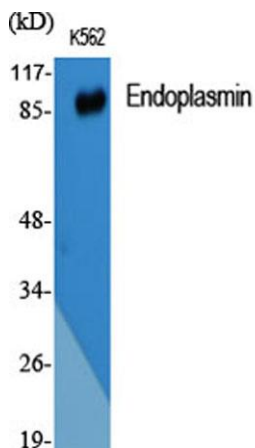
For research use only. Not intended for diagnostic use.

<b>Product Name</b>	Endoplasmin rabbit pAb
<b>Host species</b>	Rabbit
<b>Applications</b>	WB;IHC;IF;ELISA
<b>Species Cross-Reactivity</b>	Human;Mouse
<b>Recommended dilutions</b>	Western Blot: 1/500 - 1/2000. Immunohistochemistry: 1/100 - 1/300. Immunofluorescence: 1/200 - 1/1000. ELISA: 1/20000. Not yet tested in other applications.
<b>Immunogen</b>	The antiserum was produced against synthesized peptide derived from human GRP94. AA range:754-803
<b>Specificity</b>	Endoplasmin Polyclonal Antibody detects endogenous levels of Endoplasmin protein.
<b>Formulation</b>	Liquid in PBS containing 50% glycerol, 0.5% BSA and 0.02% sodium azide..
<b>Storage</b>	Store at -20°C. Avoid repeated freeze-thaw cycles.
<b>Protein Name</b>	Endoplasmin
<b>Gene Name</b>	HSP90B1
<b>Cellular localization</b>	Endoplasmic reticulum lumen . Sarcoplasmic reticulum lumen . Melanosome . Identified by mass spectrometry in melanosome fractions from stage I to stage IV. .
<b>Purification</b>	The antibody was affinity-purified from rabbit antiserum by affinity-chromatography using epitope-specific immunogen.

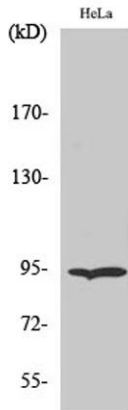
<b>Clonality</b>	Polyclonal
<b>Concentration</b>	1 mg/ml
<b>Observed band</b>	92kD
<b>Human Gene ID</b>	7184
<b>Human Swiss-Prot Number</b>	P14625
<b>Alternative Names</b>	HSP90B1; GRP94; TRA1; Endoplasmin; 94 kDa glucose-regulated protein; GRP-94; Heat shock protein 90 kDa beta member 1; Tumor rejection antigen 1; gp96 homolog

## Background

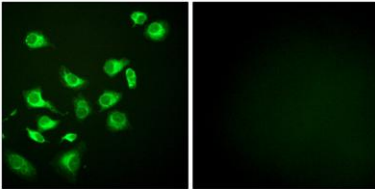
This gene encodes a member of a family of adenosine triphosphate(ATP)-metabolizing molecular chaperones with roles in stabilizing and folding other proteins. The encoded protein is localized to melanosomes and the endoplasmic reticulum. Expression of this protein is associated with a variety of pathogenic states, including tumor formation. There is a microRNA gene located within the 5' exon of this gene. There are pseudogenes for this gene on chromosomes 1 and 15. [provided by RefSeq, Aug 2012],



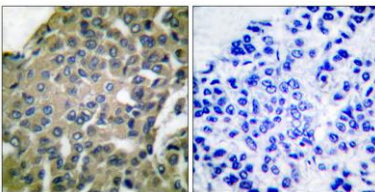
**Western Blot analysis of various cells using Endoplasmin Polyclonal Antibody diluted at 1:1000**



**Western Blot analysis of HeLa cells using Endoplasmin Polyclonal Antibody diluted at 1:1000**



**Immunofluorescence analysis of HepG2 cells, using GRP94 Antibody. The picture on the right is blocked with the synthesized peptide.**



**Immunohistochemistry analysis of paraffin-embedded human breast carcinoma tissue, using GRP94 Antibody. The picture on the right is blocked with the synthesized peptide.**