

**Endophilin B2 rabbit pAb****Cat#: orb765137 (Manual)**

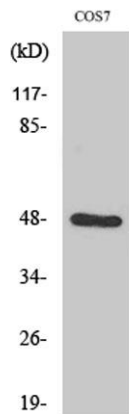
For research use only. Not intended for diagnostic use.

<b>Product Name</b>	Endophilin B2 rabbit pAb
<b>Host species</b>	Rabbit
<b>Applications</b>	WB;IHC;IF;ELISA
<b>Species Cross-Reactivity</b>	Human;Mouse;Rat;Monkey
<b>Recommended dilutions</b>	Western Blot: 1/500 - 1/2000. Immunohistochemistry: 1/100 - 1/300. ELISA: 1/40000. Not yet tested in other applications.
<b>Immunogen</b>	The antiserum was produced against synthesized peptide derived from human SH3GLB2. AA range:131-180
<b>Specificity</b>	Endophilin B2 Polyclonal Antibody detects endogenous levels of Endophilin B2 protein.
<b>Formulation</b>	Liquid in PBS containing 50% glycerol, 0.5% BSA and 0.02% sodium azide..
<b>Storage</b>	Store at -20°C. Avoid repeated freeze-thaw cycles.
<b>Protein Name</b>	Endophilin-B2
<b>Gene Name</b>	SH3GLB2
<b>Cellular localization</b>	Cytoplasm .
<b>Purification</b>	The antibody was affinity-purified from rabbit antiserum by affinity-chromatography using epitope-specific immunogen.
<b>Clonality</b>	Polyclonal

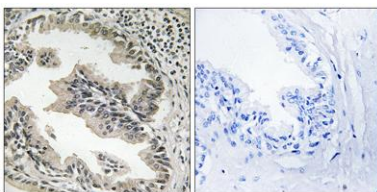
<b>Concentration</b>	1 mg/ml
<b>Observed band</b>	48kD
<b>Human Gene ID</b>	56904
<b>Human Swiss-Prot Number</b>	Q9NR46
<b>Alternative Names</b>	SH3GLB2; KIAA1848; PP578; Endophilin-B2; SH3 domain-containing GRB2-like protein B2

## Background

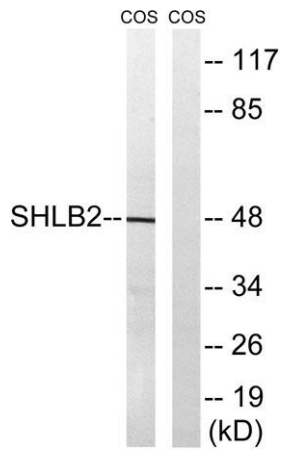
similarity:Belongs to the endophilin family.,similarity:Contains 1 BAR domain.,similarity:Contains 1 SH3 domain.,subunit:Homodimer, and heterodimer with SH3GLB1.,tissue specificity:Detected in skeletal muscle, adipocyte, brain, lung, colon and mammary gland.,



Western Blot analysis of various cells using Endophilin B2 Polyclonal Antibody diluted at 1:1000



Immunohistochemistry analysis of paraffin-embedded human prostate carcinoma tissue, using SH3GLB2 Antibody. The picture on the right is blocked with the synthesized peptide.



**Western blot analysis of lysates from COS7 cells, using SH3GLB2 Antibody. The lane on the right is blocked with the synthesized peptide.**