

**Elf-5 rabbit pAb****Cat#: orb765126 (Manual)**

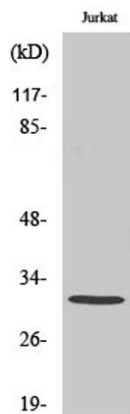
For research use only. Not intended for diagnostic use.

<b>Product Name</b>	Elf-5 rabbit pAb
<b>Host species</b>	Rabbit
<b>Applications</b>	WB;IF;ELISA
<b>Species Cross-Reactivity</b>	Human;Mouse
<b>Recommended dilutions</b>	Western Blot: 1/500 - 1/2000. Immunofluorescence: 1/200 - 1/1000. ELISA: 1/20000. Not yet tested in other applications.
<b>Immunogen</b>	The antiserum was produced against synthesized peptide derived from human ELF5. AA range:191-240
<b>Specificity</b>	Elf-5 Polyclonal Antibody detects endogenous levels of Elf-5 protein.
<b>Formulation</b>	Liquid in PBS containing 50% glycerol, 0.5% BSA and 0.02% sodium azide..
<b>Storage</b>	Store at -20°C. Avoid repeated freeze-thaw cycles.
<b>Protein Name</b>	ETS-related transcription factor Elf-5
<b>Gene Name</b>	ELF5
<b>Cellular localization</b>	Nucleus .
<b>Purification</b>	The antibody was affinity-purified from rabbit antiserum by affinity-chromatography using epitope-specific immunogen.
<b>Clonality</b>	Polyclonal

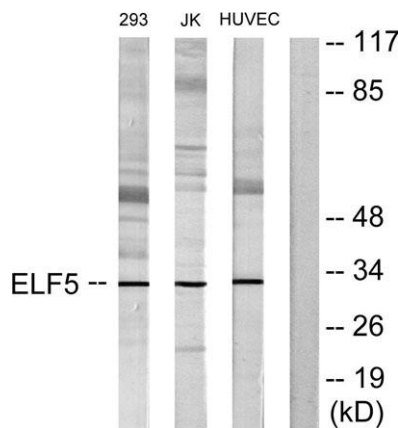
<b>Concentration</b>	1 mg/ml
<b>Observed band</b>	31kD
<b>Human Gene ID</b>	2001
<b>Human Swiss-Prot Number</b>	Q9UKW6
<b>Alternative Names</b>	ELF5; ESE2; ETS-related transcription factor Elf-5; E74-like factor 5; Epithelium-restricted ESE-1-related Ets factor; Epithelium-specific Ets transcription factor 2; ESE-2

**Background**

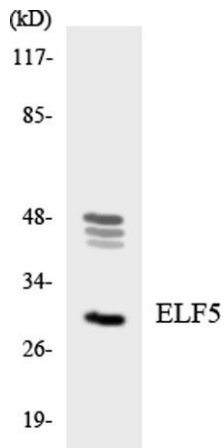
The protein encoded by this gene is a member of an epithelium-specific subclass of the Ets transcription factor family. In addition to its role in regulating the later stages of terminal differentiation of keratinocytes, it appears to regulate a number of epithelium-specific genes found in tissues containing glandular epithelium such as salivary gland and prostate. It has very low affinity to DNA due to its negative regulatory domain at the amino terminus. Several alternatively spliced transcript variants encoding different isoforms have been described for this gene. [provided by RefSeq, Jul 2011],



**Western Blot analysis of various cells using Elf-5 Polyclonal Antibody cells nucleus extracted by Minute TM Cytoplasmic and Nuclear Fractionation kit (SC-003, Invent biotech, MN, USA).**



**Western blot analysis of lysates from Jurkat, 293, and HUVEC cells, using ELF5 Antibody. The lane on the right is blocked with the synthesized peptide.**



Western blot analysis of the lysates from HT-29 cells using ELF5 antibody.