

**eIF5A2 rabbit pAb****Cat#: orb765124 (Manual)**

For research use only. Not intended for diagnostic use.

<b>Product Name</b>	eIF5A2 rabbit pAb
<b>Host species</b>	Rabbit
<b>Applications</b>	WB;ELISA
<b>Species Cross-Reactivity</b>	Human;Mouse
<b>Recommended dilutions</b>	Western Blot: 1/500 - 1/2000. ELISA: 1/10000. Not yet tested in other applications.
<b>Immunogen</b>	The antiserum was produced against synthesized peptide derived from human eIF5A2. AA range:78-127
<b>Specificity</b>	eIF5A2 Polyclonal Antibody detects endogenous levels of eIF5A2 protein.
<b>Formulation</b>	Liquid in PBS containing 50% glycerol, 0.5% BSA and 0.02% sodium azide..
<b>Storage</b>	Store at -20°C. Avoid repeated freeze-thaw cycles.
<b>Protein Name</b>	Eukaryotic translation initiation factor 5A-2
<b>Gene Name</b>	EIF5A2
<b>Cellular localization</b>	Cytoplasm . Nucleus . Endoplasmic reticulum membrane ; Peripheral membrane protein ; Cytoplasmic side . Nucleus, nuclear pore complex . Hypusine modification promotes the nuclear export and cytoplasmic localization and there was a dynamic shift in the loc
<b>Purification</b>	The antibody was affinity-purified from rabbit antiserum by affinity-chromatography using epitope-specific immunogen.

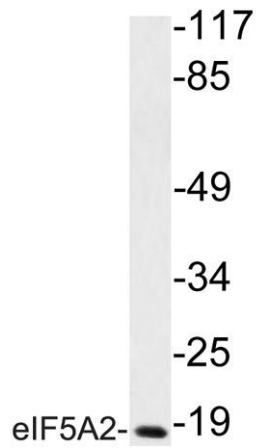
<b>Clonality</b>	Polyclonal
<b>Concentration</b>	1 mg/ml
<b>Observed band</b>	17kD
<b>Human Gene ID</b>	56648
<b>Human Swiss-Prot Number</b>	Q9GZV4
<b>Alternative Names</b>	EIF5A2; Eukaryotic translation initiation factor 5A-2; eIF-5A-2; eIF-5A2; Eukaryotic initiation factor 5A isoform 2

## Background

**function:**The precise role of eIF-5A in protein biosynthesis is not known but it functions by promoting the formation of the first peptide bond.,**PTM:**eIF-5A seems to be the only eukaryotic protein to have an hypusine residue which is a post-translational modification of a lysine by the addition of a butylamino group (from spermidine).,**similarity:**Belongs to the eIF-5A family.,**tissue specificity:**Expressed in ovarian and colorectal cancer cell lines (at protein level). Highly expressed in testis. Overexpressed in some cancer cells.,



**Western Blot analysis of various cells using eIF5A2 Polyclonal Antibody diluted at 1:1000**



Western blot analysis of lysate from HUVEC cells, using eIF5A2 antibody.