

eEF2K rabbit pAb**Cat#: orb765103 (Manual)**

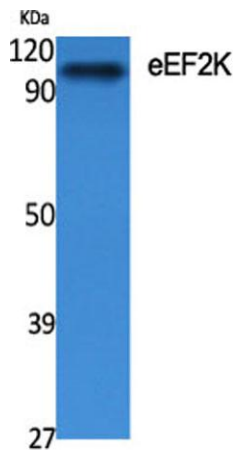
For research use only. Not intended for diagnostic use.

Product Name	eEF2K rabbit pAb
Host species	Rabbit
Applications	WB;IHC;IF;ELISA
Species Cross-Reactivity	Human;Rat
Recommended dilutions	Western Blot: 1/500 - 1/2000. Immunohistochemistry: 1/100 - 1/300. ELISA: 1/20000. Not yet tested in other applications.
Immunogen	The antiserum was produced against synthesized peptide derived from human eEF2K. AA range:331-380
Specificity	eEF2K Polyclonal Antibody detects endogenous levels of eEF2K protein.
Formulation	Liquid in PBS containing 50% glycerol, 0.5% BSA and 0.02% sodium azide..
Storage	Store at -20°C. Avoid repeated freeze-thaw cycles.
Protein Name	Eukaryotic elongation factor 2 kinase
Gene Name	EEF2K
Cellular localization	cytoplasm,cytosol,postsynaptic density,
Purification	The antibody was affinity-purified from rabbit antiserum by affinity-chromatography using epitope-specific immunogen.
Clonality	Polyclonal

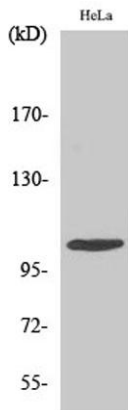
Concentration	1 mg/ml
Observed band	105kD
Human Gene ID	29904
Human Swiss-Prot Number	O00418
Alternative Names	EEF2K; Eukaryotic elongation factor 2 kinase; eEF-2 kinase; eEF-2K; Calcium/calmodulin-dependent eukaryotic elongation factor 2 kinase

Background

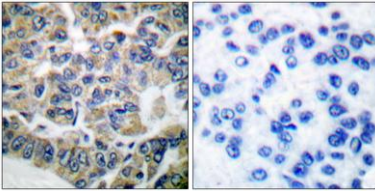
This gene encodes a highly conserved protein kinase in the calmodulin-mediated signaling pathway that links activation of cell surface receptors to cell division. This kinase is involved in the regulation of protein synthesis. It phosphorylates eukaryotic elongation factor 2 (EEF2) and thus inhibits the EEF2 function. The activity of this kinase is increased in many cancers and may be a valid target for anti-cancer treatment. [provided by RefSeq, Jul 2008],



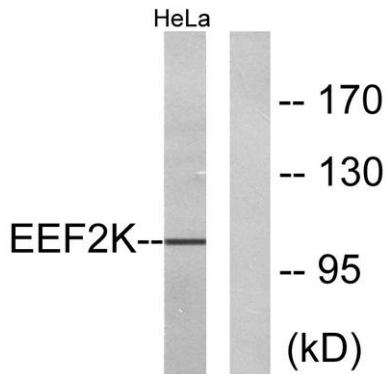
Western Blot analysis of various cells using eEF2K Polyclonal Antibody diluted at 1:500



Western Blot analysis of HeLa cells using eEF2K Polyclonal Antibody diluted at 1:500



Immunohistochemistry analysis of paraffin-embedded human breast carcinoma tissue, using eEF2K Antibody. The picture on the right is blocked with the synthesized peptide.



Western blot analysis of lysates from HeLa cells, treated with serum 10% 15', using eEF2K Antibody. The lane on the right is blocked with the synthesized peptide.