

Dynein LC 1 rabbit pAb**Cat#: orb765084 (Manual)**

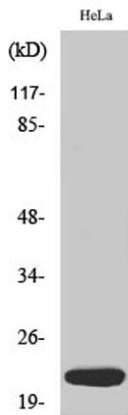
For research use only. Not intended for diagnostic use.

Product Name	Dynein LC 1 rabbit pAb
Host species	Rabbit
Applications	WB;IHC;IF;ELISA
Species Cross-Reactivity	Human;Mouse
Recommended dilutions	Western Blot: 1/500 - 1/2000. Immunohistochemistry: 1/100 - 1/300. ELISA: 1/40000. Not yet tested in other applications.
Immunogen	The antiserum was produced against synthesized peptide derived from human DNAL1. AA range:121-170
Specificity	Dynein LC 1 Polyclonal Antibody detects endogenous levels of Dynein LC 1 protein.
Formulation	Liquid in PBS containing 50% glycerol, 0.5% BSA and 0.02% sodium azide..
Storage	Store at -20°C. Avoid repeated freeze-thaw cycles.
Protein Name	Dynein light chain 1 axonemal
Gene Name	DNAL1
Cellular localization	Cytoplasm, cytoskeleton, cilium axoneme .
Purification	The antibody was affinity-purified from rabbit antiserum by affinity-chromatography using epitope-specific immunogen.
Clonality	Polyclonal

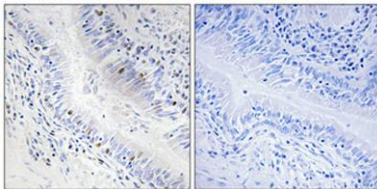
Concentration	1 mg/ml
Observed band	22kD
Human Gene ID	83544
Human Swiss-Prot Number	Q4LDG9
Alternative Names	DNAL1; C14orf168; Dynein light chain 1; axonemal

Background

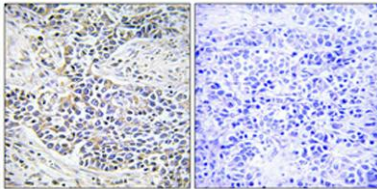
This gene encodes an axonemal dynein light chain which functions as a component of the outer dynein arms complex. This complex acts as the molecular motor that provides the force to move cilia in an ATP-dependent manner. The encoded protein is expressed in tissues with motile cilia or flagella and may be involved in the movement of sperm flagella. Alternate splicing results in multiple transcript variants.[provided by RefSeq, Jan 2011],



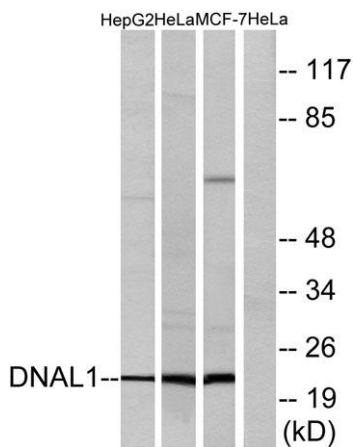
Western Blot analysis of various cells using Dynein LC 1 Polyclonal Antibody diluted at 1:500



Immunohistochemical analysis of paraffin-embedded Human lung cancer. Antibody was diluted at 1:100(4° overnight). High-pressure and temperature Tris-EDTA,pH8.0 was used for antigen retrieval. Negative control (right) obtained from antibody was pre-absorbed by immunogen peptide.



Immunohistochemical analysis of paraffin-embedded Human lung cancer. Antibody was diluted at 1:100(4° overnight). High-pressure and temperature Tris-EDTA,pH8.0 was used for antigen retrieval. Negative control (right) obtained from antibody was pre-absorbed by immunogen peptide.



Western blot analysis of lysates from HeLa, HepG2, and MCF-7 cells, using DNAL1 Antibody. The lane on the right is blocked with the synthesized peptide.