

**DRS-1 rabbit pAb****Cat#: orb765078 (Manual)**

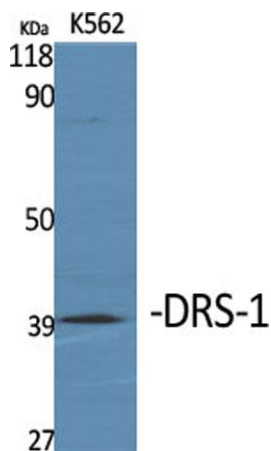
For research use only. Not intended for diagnostic use.

<b>Product Name</b>	DRS-1 rabbit pAb
<b>Host species</b>	Rabbit
<b>Applications</b>	WB;IHC;IF;ELISA
<b>Species Cross-Reactivity</b>	Human;Rat;Mouse;
<b>Recommended dilutions</b>	Western Blot: 1/500 - 1/2000. Immunohistochemistry: 1/100 - 1/300. ELISA: 1/20000. Not yet tested in other applications.
<b>Immunogen</b>	The antiserum was produced against synthesized peptide derived from human PECl. AA range:73-122
<b>Specificity</b>	DRS-1 Polyclonal Antibody detects endogenous levels of DRS-1 protein.
<b>Formulation</b>	Liquid in PBS containing 50% glycerol, 0.5% BSA and 0.02% sodium azide..
<b>Storage</b>	Store at -20°C. Avoid repeated freeze-thaw cycles.
<b>Protein Name</b>	Enoyl-CoA delta isomerase 2 mitochondrial
<b>Gene Name</b>	ECI2
<b>Cellular localization</b>	[Isoform 1]: Mitochondrion .; [Isoform 2]: Peroxisome matrix .
<b>Purification</b>	The antibody was affinity-purified from rabbit antiserum by affinity-chromatography using epitope-specific immunogen.
<b>Clonality</b>	Polyclonal

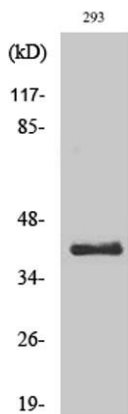
<b>Concentration</b>	1 mg/ml
<b>Observed band</b>	40kD
<b>Human Gene ID</b>	10455
<b>Human Swiss-Prot Number</b>	O75521
<b>Alternative Names</b>	ECI2; DRS1; HCA88; PECl; Enoyl-CoA delta isomerase 2; mitochondrial; DRS-1; Delta(3),delta(2)-enoyl-CoA isomerase; D3,D2-enoyl-CoA isomerase; Diazepam-binding inhibitor-related protein 1; DBI-related protein 1; Dodecenoyl-CoA isomerase; Hep

**Background**

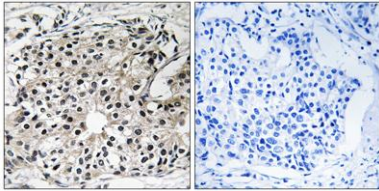
This gene encodes a member of the hydratase/isomerase superfamily. The protein encoded is a key mitochondrial enzyme involved in beta-oxidation of unsaturated fatty acids. It catalyzes the transformation of 3-cis and 3-trans-enoyl-CoA esters arising during the stepwise degradation of cis-, mono-, and polyunsaturated fatty acids to the 2-trans-enoyl-CoA intermediates. Alternatively spliced transcript variants have been described. [provided by RefSeq, Aug 2011],



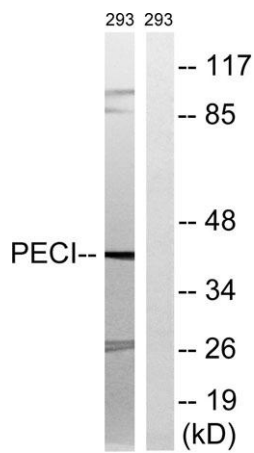
Western Blot analysis of various cells using DRS-1 Polyclonal Antibody



Western Blot analysis of 293 cells using DRS-1 Polyclonal Antibody



**Immunohistochemistry analysis of paraffin-embedded human breast carcinoma tissue, using Peci Antibody. The picture on the right is blocked with the synthesized peptide.**



**Western blot analysis of lysates from 293 cells, using Peci Antibody. The lane on the right is blocked with the synthesized peptide.**