

**Dok-2 rabbit pAb****Cat#: orb765066 (Manual)**

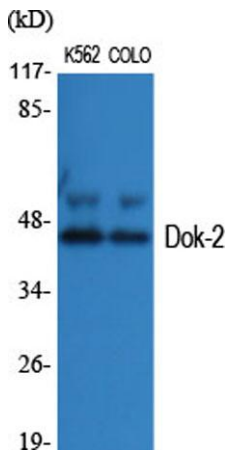
For research use only. Not intended for diagnostic use.

<b>Product Name</b>	Dok-2 rabbit pAb
<b>Host species</b>	Rabbit
<b>Applications</b>	WB;IHC;IF;ELISA
<b>Species Cross-Reactivity</b>	Human;Mouse
<b>Recommended dilutions</b>	Western Blot: 1/500 - 1/2000. Immunohistochemistry: 1/100 - 1/300. Immunofluorescence: 1/200 - 1/1000. ELISA: 1/20000. Not yet tested in other applications.
<b>Immunogen</b>	The antiserum was produced against synthesized peptide derived from human p56 Dok-2. AA range:266-315
<b>Specificity</b>	Dok-2 Polyclonal Antibody detects endogenous levels of Dok-2 protein.
<b>Formulation</b>	Liquid in PBS containing 50% glycerol, 0.5% BSA and 0.02% sodium azide..
<b>Storage</b>	Store at -20°C. Avoid repeated freeze-thaw cycles.
<b>Protein Name</b>	Docking protein 2
<b>Gene Name</b>	DOK2
<b>Cellular localization</b>	cytosol,
<b>Purification</b>	The antibody was affinity-purified from rabbit antiserum by affinity-chromatography using epitope-specific immunogen.
<b>Clonality</b>	Polyclonal

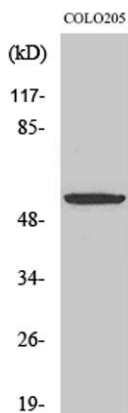
<b>Concentration</b>	1 mg/ml
<b>Observed band</b>	46kD
<b>Human Gene ID</b>	9046
<b>Human Swiss-Prot Number</b>	O60496
<b>Alternative Names</b>	DOK2; Docking protein 2; Downstream of tyrosine kinase 2; p56(dok-2)

## Background

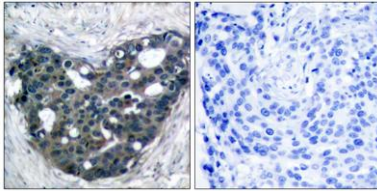
docking protein 2(DOK2) Homo sapiens The protein encoded by this gene is constitutively tyrosine phosphorylated in hematopoietic progenitors isolated from chronic myelogenous leukemia (CML) patients in the chronic phase. It may be a critical substrate for p210(bcr/abl), a chimeric protein whose presence is associated with CML. This encoded protein binds p120 (RasGAP) from CML cells. [provided by RefSeq, Jul 2008],



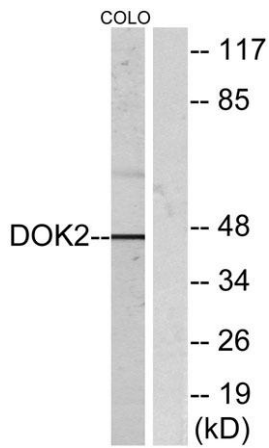
Western Blot analysis of various cells using Dok-2 Polyclonal Antibody



Western Blot analysis of COLO205 cells using Dok-2 Polyclonal Antibody



Immunohistochemistry analysis of paraffin-embedded human breast carcinoma tissue, using p56 Dok-2 Antibody. The picture on the right is blocked with the synthesized peptide.



Western blot analysis of lysates from COLO205, using p56 Dok-2 Antibody. The lane on the right is blocked with the synthesized peptide.