

DNA pol β rabbit pAb**Cat#: orb765060 (Manual)**

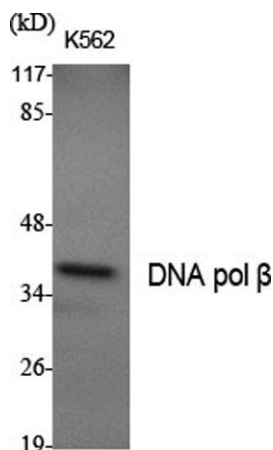
For research use only. Not intended for diagnostic use.

Product Name	DNA pol β rabbit pAb
Host species	Rabbit
Applications	WB;IHC;IF;ELISA
Species Cross-Reactivity	Human;Mouse;Rat
Recommended dilutions	Western Blot: 1/500 - 1/2000. Immunohistochemistry: 1/100 - 1/300. ELISA: 1/10000. Not yet tested in other applications.
Immunogen	The antiserum was produced against synthesized peptide derived from human DNA Polymerase beta. AA range:286-335
Specificity	DNA pol β Polyclonal Antibody detects endogenous levels of DNA pol β protein.
Formulation	Liquid in PBS containing 50% glycerol, 0.5% BSA and 0.02% sodium azide..
Storage	Store at -20°C. Avoid repeated freeze-thaw cycles.
Protein Name	DNA polymerase beta
Gene Name	POLB
Cellular localization	Nucleus. Cytoplasm. Cytoplasmic in normal conditions. Translocates to the nucleus following DNA damage.
Purification	The antibody was affinity-purified from rabbit antiserum by affinity-chromatography using epitope-specific immunogen.
Clonality	Polyclonal

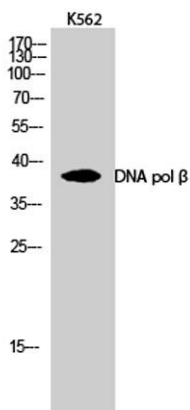
Concentration	1 mg/ml
Observed band	38kD
Human Gene ID	5423
Human Swiss-Prot Number	P06746
Alternative Names	POLB; DNA polymerase beta

Background

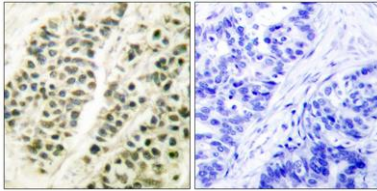
The protein encoded by this gene is a DNA polymerase involved in base excision and repair, also called gap-filling DNA synthesis. The encoded protein, acting as a monomer, is normally found in the cytoplasm, but it translocates to the nucleus upon DNA damage. Several transcript variants of this gene exist, but the full-length nature of only one has been described to date. [provided by RefSeq, Sep 2011],



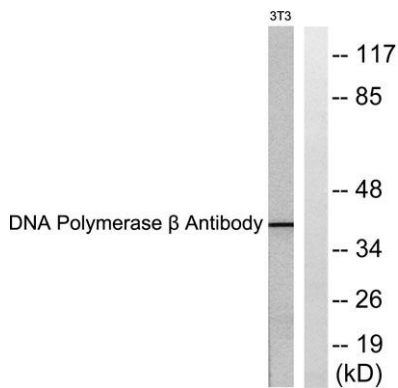
Western Blot analysis of various cells using DNA pol β Polyclonal Antibody



Western Blot analysis of K562 cells using DNA pol β Polyclonal Antibody



Immunohistochemistry analysis of paraffin-embedded human breast carcinoma tissue, using DNA Polymerase beta Antibody. The picture on the right is blocked with the synthesized peptide.



Western blot analysis of lysates from NIH/3T3 cells, using DNA Polymerase beta Antibody. The lane on the right is blocked with the synthesized peptide.