

DNA Ligase III rabbit pAb**Cat#: orb765057 (Manual)**

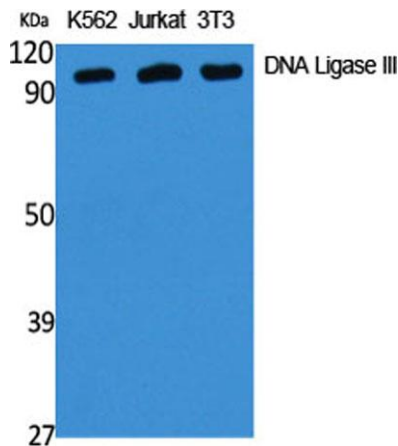
For research use only. Not intended for diagnostic use.

| | |
|---------------------------------|---|
| Product Name | DNA Ligase III rabbit pAb |
| Host species | Rabbit |
| Applications | WB;ELISA |
| Species Cross-Reactivity | Human;Mouse;Rat |
| Recommended dilutions | Western Blot: 1/500 - 1/2000. ELISA: 1/10000. Not yet tested in other applications. |
| Immunogen | Synthesized peptide derived from DNA Ligase III . at AA range: 110-190 |
| Specificity | DNA Ligase III Polyclonal Antibody detects endogenous levels of DNA Ligase III protein. |
| Formulation | Liquid in PBS containing 50% glycerol, 0.5% BSA and 0.02% sodium azide.. |
| Storage | Store at -20°C. Avoid repeated freeze-thaw cycles. |
| Protein Name | DNA ligase 3 |
| Gene Name | LIG3 |
| Cellular localization | [Isoform 1]: Mitochondrion . Contains an N-terminal mitochondrial transit peptide. .; [Isoform 2]: Mitochondrion . Contains an N-terminal mitochondrial transit peptide. .; [Isoform 3]: Nucleus . Lacks the N-terminal mitochondrial transit peptide. .; [Isof |
| Purification | The antibody was affinity-purified from rabbit antiserum by affinity-chromatography using epitope-specific immunogen. |

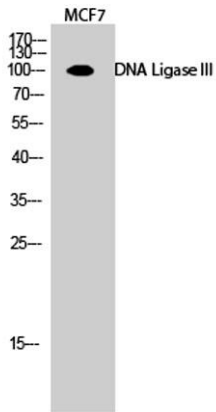
| | |
|--------------------------------|--|
| Clonality | Polyclonal |
| Concentration | 1 mg/ml |
| Observed band | 100kD |
| Human Gene ID | 3980 |
| Human Swiss-Prot Number | P49916 |
| Alternative Names | LIG3; DNA ligase 3; DNA ligase III; Polydeoxyribonucleotide synthase [ATP] 3 |

Background

This gene is a member of the DNA ligase family. Each member of this family encodes a protein that catalyzes the joining of DNA ends but they each have a distinct role in DNA metabolism. The protein encoded by this gene is involved in excision repair and is located in both the mitochondria and nucleus, with translation initiation from the upstream start codon allowing for transport to the mitochondria and translation initiation from a downstream start codon allowing for transport to the nucleus. Additionally, alternate transcriptional splice variants, encoding different isoforms, have been characterized. [provided by RefSeq, Jul 2008],



Western Blot analysis of various cells using DNA Ligase III Polyclonal Antibody diluted at 1:1000 cells nucleus extracted by Minute™ Cytoplasmic and Nuclear Fractionation kit (SC-003, Inventbiotech, MN, USA).



Western Blot analysis of MCF7 cells using DNA Ligase III Polyclonal Antibody diluted at 1:1000 cells nucleus extracted by Minute™ Cytoplasmic and Nuclear Fractionation kit (SC-003, Inventbiotech, MN, USA).