

DHRS2 rabbit pAb**Cat#: orb765044 (Manual)**

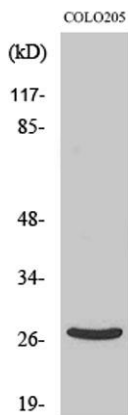
For research use only. Not intended for diagnostic use.

Product Name	DHRS2 rabbit pAb
Host species	Rabbit
Applications	WB;ELISA
Species Cross-Reactivity	Human;Mouse
Recommended dilutions	Western Blot: 1/500 - 1/2000. ELISA: 1/40000. Not yet tested in other applications.
Immunogen	The antiserum was produced against synthesized peptide derived from human DHRS2. AA range:111-160
Specificity	DHRS2 Polyclonal Antibody detects endogenous levels of DHRS2 protein.
Formulation	Liquid in PBS containing 50% glycerol, 0.5% BSA and 0.02% sodium azide..
Storage	Store at -20°C. Avoid repeated freeze-thaw cycles.
Protein Name	Dehydrogenase/reductase SDR family member 2
Gene Name	DHRS2
Cellular localization	Mitochondrion matrix. Nucleus. A minor fraction of the protein is translocated from the mitochondria to the nucleus, after cleavage of the targeting signal.
Purification	The antibody was affinity-purified from rabbit antiserum by affinity-chromatography using epitope-specific immunogen.

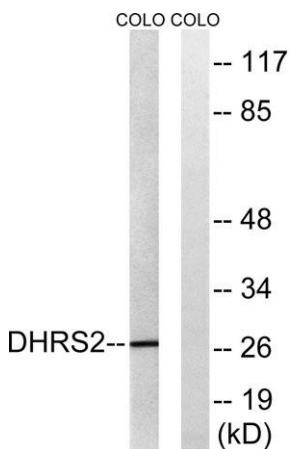
Clonality	Polyclonal
Concentration	1 mg/ml
Observed band	27kD
Human Gene ID	10202
Human Swiss-Prot Number	Q13268
Alternative Names	DHRS2; Dehydrogenase/reductase SDR family member 2; Dicarbonyl reductase HEP27; Protein D

Background

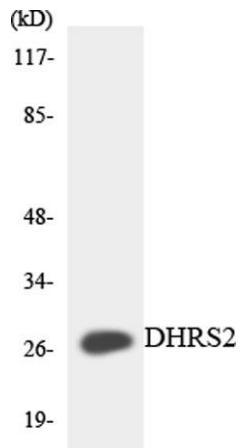
function: May inhibit cell replication either by catalyzing the oxidation of estrogen and androgen or by converting cortisone in cortisol., similarity: Belongs to the short-chain dehydrogenases/reductases (SDR) family.,



Western Blot analysis of various cells using DHRS2 Polyclonal Antibody



Western blot analysis of lysates from COLO cells, using DHRS2 Antibody. The lane on the right is blocked with the synthesized peptide.



Western blot analysis of the lysates from HeLa cells using DHRS2 antibody.