

DBP rabbit pAb**Cat#: orb765024 (Manual)**

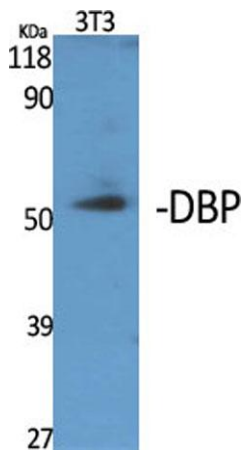
For research use only. Not intended for diagnostic use.

Product Name	DBP rabbit pAb
Host species	Rabbit
Applications	WB;ELISA
Species Cross-Reactivity	Human;Monkey
Recommended dilutions	Western Blot: 1/500 - 1/2000. ELISA: 1/40000. Not yet tested in other applications.
Immunogen	Synthesized peptide derived from DBP . at AA range: 90-170
Specificity	DBP Polyclonal Antibody detects endogenous levels of DBP protein.
Formulation	Liquid in PBS containing 50% glycerol, 0.5% BSA and 0.02% sodium azide..
Storage	Store at -20°C. Avoid repeated freeze-thaw cycles.
Protein Name	Vitamin D-binding protein
Gene Name	GC
Cellular localization	Secreted .
Purification	The antibody was affinity-purified from rabbit antiserum by affinity-chromatography using epitope-specific immunogen.
Clonality	Polyclonal

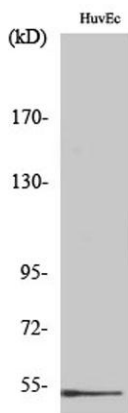
Concentration	1 mg/ml
Observed band	55kD
Human Gene ID	2638
Human Swiss-Prot Number	P02774
Alternative Names	GC; Vitamin D-binding protein; DBP; VDB; Gc-globulin; Group-specific component

Background

The protein encoded by this gene belongs to the albumin gene family. It is a multifunctional protein found in plasma, ascitic fluid, cerebrospinal fluid and on the surface of many cell types. It binds to vitamin D and its plasma metabolites and transports them to target tissues. Alternatively spliced transcript variants encoding different isoforms have been found for this gene.[provided by RefSeq, Feb 2011],



Western Blot analysis of various cells using DBP Polyclonal Antibody



Western Blot analysis of COS7 cells using DBP Polyclonal Antibody