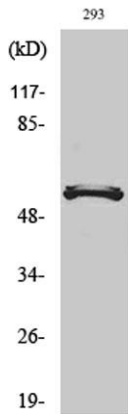


**DACA-1 rabbit pAb****Cat#: orb765015 (Manual)**

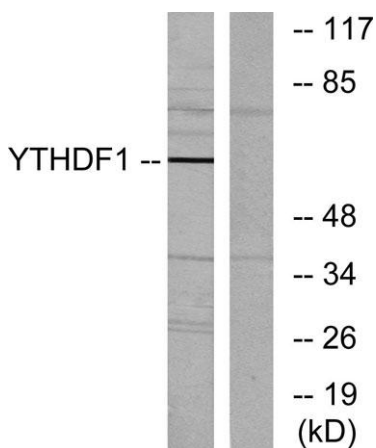
For research use only. Not intended for diagnostic use.

<b>Product Name</b>	DACA-1 rabbit pAb
<b>Host species</b>	Rabbit
<b>Applications</b>	WB;IHC;IF;ELISA
<b>Species Cross-Reactivity</b>	Human;Mouse;Rat
<b>Recommended dilutions</b>	Western Blot: 1/500 - 1/2000. Immunohistochemistry: 1/100 - 1/300. ELISA: 1/5000. Not yet tested in other applications.
<b>Immunogen</b>	The antiserum was produced against synthesized peptide derived from human YTHDF1. AA range:1-50
<b>Specificity</b>	DACA-1 Polyclonal Antibody detects endogenous levels of DACA-1 protein.
<b>Formulation</b>	Liquid in PBS containing 50% glycerol, 0.5% BSA and 0.02% sodium azide..
<b>Storage</b>	Store at -20°C. Avoid repeated freeze-thaw cycles.
<b>Protein Name</b>	YTH domain family protein 1
<b>Gene Name</b>	YTHDF1
<b>Cellular localization</b>	Cytoplasm . Cytoplasm, P-body . Cytoplasm, Stress granule .
<b>Purification</b>	The antibody was affinity-purified from rabbit antiserum by affinity-chromatography using epitope-specific immunogen.
<b>Clonality</b>	Polyclonal

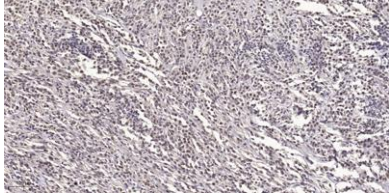
<b>Concentration</b>	1 mg/ml
<b>Observed band</b>	61kD
<b>Human Gene ID</b>	54915
<b>Human Swiss-Prot Number</b>	Q9BYJ9
<b>Alternative Names</b>	YTHDF1; C20orf21; YTH domain family protein 1; Dermatomyositis associated with cancer putative autoantigen 1; DACA-1
<b>Background</b>	similarity:Contains 1 YTH domain.,



Western Blot analysis of various cells using DACA-1 Polyclonal Antibody



Western blot analysis of lysates from 293 cells, using YTHDF1 Antibody. The lane on the right is blocked with the synthesized peptide.



**Immunohistochemical analysis of paraffin-embedded human small intestinal carcinoma tissue. 1,primary Antibody was diluted at 1:200(4° overnight). 2, Sodium citrate pH 6.0 was used for antigen retrieval(>98°C,20min). 3,Secondary antibody was diluted at 1:2**