

Dab1 rabbit pAb**Cat#: orb765014 (Manual)**

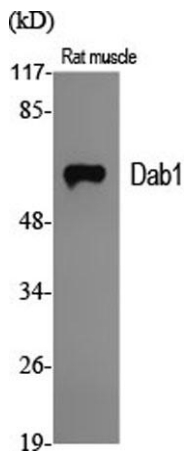
For research use only. Not intended for diagnostic use.

Product Name	Dab1 rabbit pAb
Host species	Rabbit
Applications	WB;IF;ELISA
Species Cross-Reactivity	Human;Mouse;Rat
Recommended dilutions	Western Blot: 1/500 - 1/2000. Immunofluorescence: 1/200 - 1/1000. ELISA: 1/20000. Not yet tested in other applications.
Immunogen	The antiserum was produced against synthesized peptide derived from human Dab1. AA range:199-248
Specificity	Dab1 Polyclonal Antibody detects endogenous levels of Dab1 protein.
Formulation	Liquid in PBS containing 50% glycerol, 0.5% BSA and 0.02% sodium azide..
Storage	Store at -20°C. Avoid repeated freeze-thaw cycles.
Protein Name	Disabled homolog 1
Gene Name	DAB1
Cellular localization	nucleolus,microtubule organizing center,cytosol,brush border,postsynaptic density,membrane,neuron projection,neuronal cell body,intracellular membrane-bounded organelle,apical part of cell,perinuclear region of cytoplasm,
Purification	The antibody was affinity-purified from rabbit antiserum by affinity-chromatography using epitope-specific immunogen.

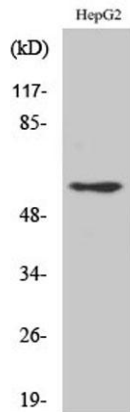
Clonality	Polyclonal
Concentration	1 mg/ml
Observed band	60kD
Human Gene ID	1600
Human Swiss-Prot Number	O75553
Alternative Names	DAB1; Disabled homolog 1

Background

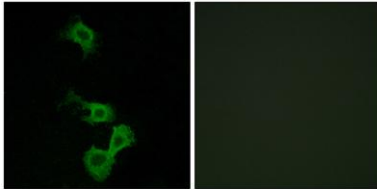
The laminar organization of multiple neuronal types in the cerebral cortex is required for normal cognitive function. In mice, the disabled-1 gene plays a central role in brain development, directing the migration of cortical neurons past previously formed neurons to reach their proper layer. This gene is similar to disabled-1, and the protein encoded by this gene is thought to be a signal transducer that interacts with protein kinase pathways to regulate neuronal positioning in the developing brain. Alternatively spliced transcript variants of this gene have been reported, but their full length nature has not been determined. [provided by RefSeq, Jul 2008],



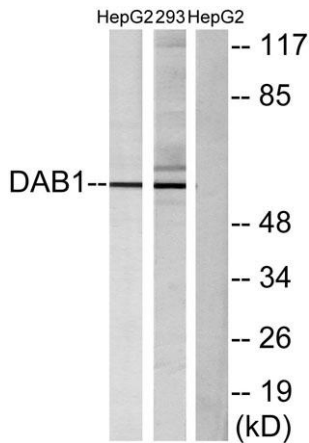
Western Blot analysis of various cells using Dab1 Polyclonal Antibody



Western Blot analysis of 293 cells using Dab1 Polyclonal Antibody



Immunofluorescence analysis of MCF7 cells, using Dab1 Antibody. The picture on the right is blocked with the synthesized peptide.



Western blot analysis of lysates from HepG2 and 293 cells, using Dab1 Antibody. The lane on the right is blocked with the synthesized peptide.