

**Cytokeratin 17 rabbit pAb****Cat#: orb765002 (Manual)**

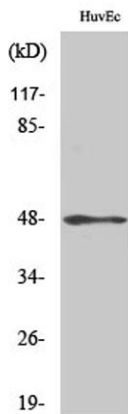
For research use only. Not intended for diagnostic use.

<b>Product Name</b>	Cytokeratin 17 rabbit pAb
<b>Host species</b>	Rabbit
<b>Applications</b>	WB;IHC;IF;ELISA
<b>Species Cross-Reactivity</b>	Human;Mouse;Rat
<b>Recommended dilutions</b>	Western Blot: 1/500 - 1/2000. Immunohistochemistry: 1/100 - 1/300. Immunofluorescence: 1/200 - 1/1000. ELISA: 1/20000. Not yet tested in other applications.
<b>Immunogen</b>	The antiserum was produced against synthesized peptide derived from human Keratin 17. AA range:381-430
<b>Specificity</b>	Cytokeratin 17 Polyclonal Antibody detects endogenous levels of Cytokeratin 17 protein.
<b>Formulation</b>	Liquid in PBS containing 50% glycerol, 0.5% BSA and 0.02% sodium azide..
<b>Storage</b>	Store at -20°C. Avoid repeated freeze-thaw cycles.
<b>Protein Name</b>	Keratin type I cytoskeletal 17
<b>Gene Name</b>	KRT17
<b>Cellular localization</b>	Cytoplasm .
<b>Purification</b>	The antibody was affinity-purified from rabbit antiserum by affinity-chromatography using epitope-specific immunogen.
<b>Clonality</b>	Polyclonal

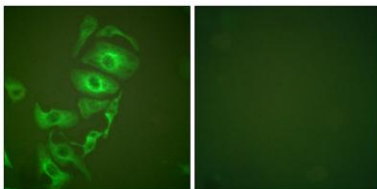
<b>Concentration</b>	1 mg/ml
<b>Observed band</b>	48kD
<b>Human Gene ID</b>	3872
<b>Human Swiss-Prot Number</b>	Q04695
<b>Alternative Names</b>	KRT17; Keratin; type I cytoskeletal 17; 39.1; Cytokeratin-17; CK-17; Keratin-17; K17

## Background

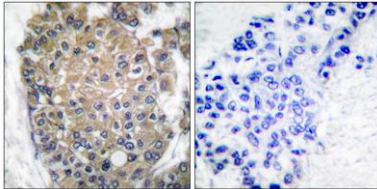
This gene encodes the type I intermediate filament chain keratin 17, expressed in nail bed, hair follicle, sebaceous glands, and other epidermal appendages. Mutations in this gene lead to Jackson-Lawler type pachyonychia congenita and steatocystoma multiplex. [provided by RefSeq, Aug 2008],



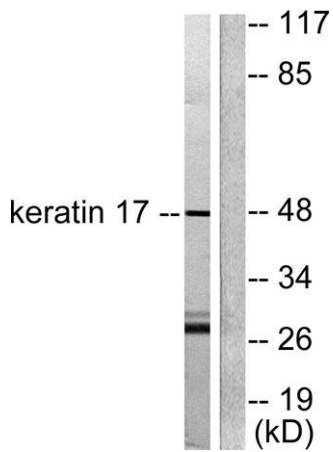
Western Blot analysis of various cells using Cytokeratin 17 Polyclonal Antibody diluted at 1:2000



Immunofluorescence analysis of HepG2 cells, using Keratin 17 Antibody. The picture on the right is blocked with the synthesized peptide.



Immunohistochemistry analysis of paraffin-embedded human breast carcinoma tissue, using Keratin 17 Antibody. The picture on the right is blocked with the synthesized peptide.



Western blot analysis of lysates from HUVEC cells, using Keratin 17 Antibody. The lane on the right is blocked with the synthesized peptide.