

**Cytokeratin 10 rabbit pAb****Cat#: orb764998 (Manual)**

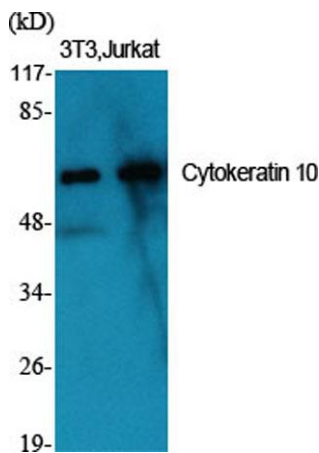
For research use only. Not intended for diagnostic use.

<b>Product Name</b>	Cytokeratin 10 rabbit pAb
<b>Host species</b>	Rabbit
<b>Applications</b>	WB;IHC;IF;ELISA
<b>Species Cross-Reactivity</b>	Human;Mouse;Rat
<b>Recommended dilutions</b>	Western Blot: 1/500 - 1/2000. Immunohistochemistry: 1/100 - 1/300. Immunofluorescence: 1/200 - 1/1000. ELISA: 1/20000. Not yet tested in other applications.
<b>Immunogen</b>	The antiserum was produced against synthesized peptide derived from human Keratin 10. AA range:136-185
<b>Specificity</b>	Cytokeratin 10 Polyclonal Antibody detects endogenous levels of Cytokeratin 10 protein.
<b>Formulation</b>	Liquid in PBS containing 50% glycerol, 0.5% BSA and 0.02% sodium azide..
<b>Storage</b>	Store at -20°C. Avoid repeated freeze-thaw cycles.
<b>Protein Name</b>	Keratin type I cytoskeletal 10
<b>Gene Name</b>	KRT10
<b>Cellular localization</b>	Secreted, extracellular space . Cell surface . Localized on the surface of desquamated nasal epithelial cells (PubMed:12427098). Localized on the surface of lung cell lines (PubMed:19627498). .
<b>Purification</b>	The antibody was affinity-purified from rabbit antiserum by affinity-chromatography using epitope-specific immunogen.

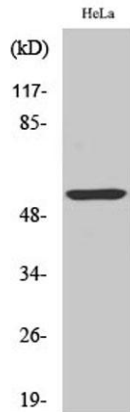
<b>Clonality</b>	Polyclonal
<b>Concentration</b>	1 mg/ml
<b>Observed band</b>	59kD
<b>Human Gene ID</b>	3858
<b>Human Swiss-Prot Number</b>	P13645
<b>Alternative Names</b>	KRT10; KPP; Keratin; type I cytoskeletal 10; Cytokeratin-10; CK-10; Keratin-10; K10

**Background**

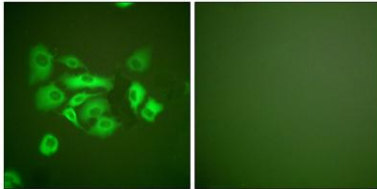
This gene encodes a member of the type I (acidic) cytoke­ratin family, which belongs to the superfamily of intermediate filament (IF) proteins. Keratins are heteropolymeric structural proteins which form the intermediate filament. These filaments, along with actin microfilaments and microtubules, compose the cytoskeleton of epithelial cells. Mutations in this gene are associated with epidermolytic hyperkeratosis. This gene is located within a cluster of keratin family members on chromosome 17q21. [provided by RefSeq, Jul 2008],



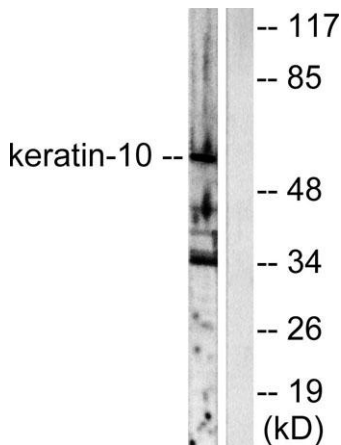
**Western Blot analysis of various cells using Cytokeratin 10 Polyclonal Antibody**



Western Blot analysis of HeLa cells using Cytokeratin 10 Polyclonal Antibody



Immunofluorescence analysis of A549 cells, using Keratin 10 Antibody. The picture on the right is blocked with the synthesized peptide.



Western blot analysis of lysates from HeLa cells, using Keratin 10 Antibody. The lane on the right is blocked with the synthesized peptide.