

**CYP8B1 rabbit pAb****Cat#: orb764989 (Manual)**

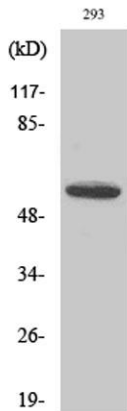
For research use only. Not intended for diagnostic use.

<b>Product Name</b>	CYP8B1 rabbit pAb
<b>Host species</b>	Rabbit
<b>Applications</b>	WB;IHC;IF;ELISA
<b>Species Cross-Reactivity</b>	Human;Mouse
<b>Recommended dilutions</b>	Western Blot: 1/500 - 1/2000. Immunohistochemistry: 1/100 - 1/300. ELISA: 1/40000. Not yet tested in other applications.
<b>Immunogen</b>	The antiserum was produced against synthesized peptide derived from human Cytochrome P450 8B1. AA range:371-420
<b>Specificity</b>	CYP8B1 Polyclonal Antibody detects endogenous levels of CYP8B1 protein.
<b>Formulation</b>	Liquid in PBS containing 50% glycerol, 0.5% BSA and 0.02% sodium azide..
<b>Storage</b>	Store at -20°C. Avoid repeated freeze-thaw cycles.
<b>Protein Name</b>	7-alpha-hydroxycholest-4-en-3-one 12-alpha-hydroxylase
<b>Gene Name</b>	CYP8B1
<b>Cellular localization</b>	Endoplasmic reticulum membrane ; Single-pass membrane protein . Microsome membrane ; Single-pass membrane protein .
<b>Purification</b>	The antibody was affinity-purified from rabbit antiserum by affinity-chromatography using epitope-specific immunogen.
<b>Clonality</b>	Polyclonal

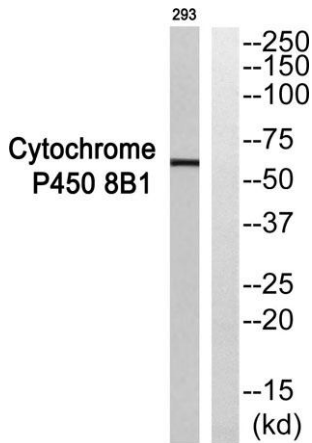
<b>Concentration</b>	1 mg/ml
<b>Observed band</b>	58kD
<b>Human Gene ID</b>	1582
<b>Human Swiss-Prot Number</b>	Q9UNU6
<b>Alternative Names</b>	CYP8B1; CYP12; 7-alpha-hydroxycholest-4-en-3-one 12-alpha-hydroxylase; 7-alpha-hydroxy-4-cholesten-3-one 12-alpha-hydroxylase; CYPVIII B1; Cytochrome P450 8B1; Sterol 12-alpha-hydroxylase

## Background

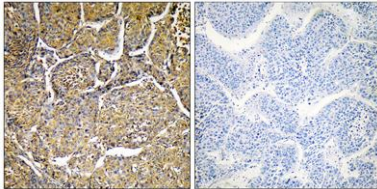
This gene encodes a member of the cytochrome P450 superfamily of enzymes. The cytochrome P450 proteins are monooxygenases which catalyze many reactions involved in drug metabolism and synthesis of cholesterol, steroids and other lipids. This endoplasmic reticulum membrane protein catalyzes the conversion of 7 alpha-hydroxy-4-cholesten-3-one into 7-alpha,12-alpha-dihydroxy-4-cholesten-3-one. The balance between these two steroids determines the relative amounts of cholic acid and chenodeoxycholic acid both of which are secreted in the bile and affect the solubility of cholesterol. This gene is unique among the cytochrome P450 genes in that it is intronless. [provided by RefSeq, Jul 2008],



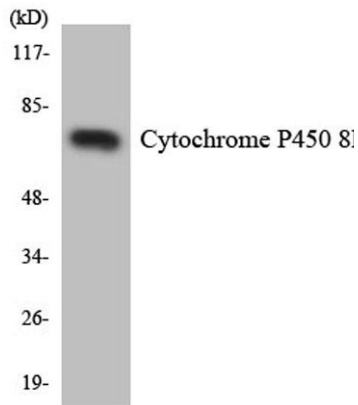
Western Blot analysis of various cells using CYP8B1 Polyclonal Antibody



Western blot analysis of Cytochrome P450 8B1 Antibody. The lane on the right is blocked with the Cytochrome P450 8B1 peptide.



Immunohistochemistry analysis of paraffin-embedded human liver, using Cytochrome P450 8B1 Antibody. The lane on the right is blocked with the Cytochrome P450 8B1 peptide.



Western blot analysis of the lysates from HT-29 cells using Cytochrome P450 8B1 antibody.