

CYP2J2 rabbit pAb**Cat#: orb764979 (Manual)**

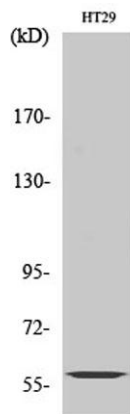
For research use only. Not intended for diagnostic use.

Product Name	CYP2J2 rabbit pAb
Host species	Rabbit
Applications	WB;IHC;IF;ELISA
Species Cross-Reactivity	Human;Monkey
Recommended dilutions	Western Blot: 1/500 - 1/2000. Immunohistochemistry: 1/100 - 1/300. Immunofluorescence: 1/200 - 1/1000. ELISA: 1/10000. Not yet tested in other applications.
Immunogen	The antiserum was produced against synthesized peptide derived from human Cytochrome P450 2J2. AA range:231-280
Specificity	CYP2J2 Polyclonal Antibody detects endogenous levels of CYP2J2 protein.
Formulation	Liquid in PBS containing 50% glycerol, 0.5% BSA and 0.02% sodium azide..
Storage	Store at -20°C. Avoid repeated freeze-thaw cycles.
Protein Name	Cytochrome P450 2J2
Gene Name	CYP2J2
Cellular localization	Endoplasmic reticulum membrane; Peripheral membrane protein. Microsome membrane ; Peripheral membrane protein.
Purification	The antibody was affinity-purified from rabbit antiserum by affinity-chromatography using epitope-specific immunogen.
Clonality	Polyclonal

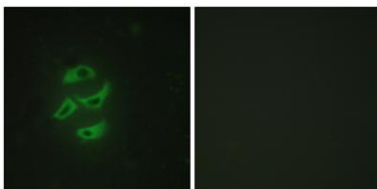
Concentration	1 mg/ml
Observed band	58kD
Human Gene ID	1573
Human Swiss-Prot Number	P51589
Alternative Names	CYP2J2; Cytochrome P450 2J2; Arachidonic acid epoxygenase; CYP11J2

Background

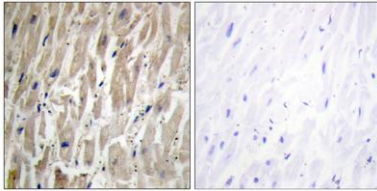
This gene encodes a member of the cytochrome P450 superfamily of enzymes. The cytochrome P450 proteins are monooxygenases which catalyze many reactions involved in drug metabolism and synthesis of cholesterol, steroids and other lipids. This protein localizes to the endoplasmic reticulum and is thought to be the predominant enzyme responsible for epoxidation of endogenous arachidonic acid in cardiac tissue. Multiple transcript variants have been found for this gene. [provided by RefSeq, Jan 2016],



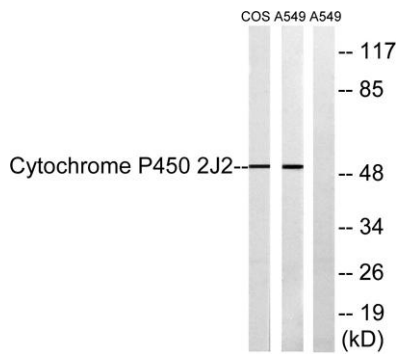
Western Blot analysis of various cells using CYP2J2 Polyclonal Antibody



Immunofluorescence analysis of HepG2 cells, using Cytochrome P450 2J2 Antibody. The picture on the right is blocked with the synthesized peptide.



Immunohistochemistry analysis of paraffin-embedded human heart tissue, using Cytochrome P450 2J2 Antibody. The picture on the right is blocked with the synthesized peptide.



Western blot analysis of lysates from A549 and COS7 cells, using Cytochrome P450 2J2 Antibody. The lane on the right is blocked with the synthesized peptide.