

CYP1A1/2 rabbit pAb**Cat#: orb764968 (Manual)**

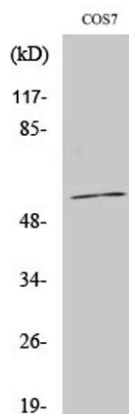
For research use only. Not intended for diagnostic use.

Product Name	CYP1A1/2 rabbit pAb
Host species	Rabbit
Applications	WB;IHC;IF;ELISA
Species Cross-Reactivity	Human;Mouse;Rat;Monkey
Recommended dilutions	Western Blot: 1/500 - 1/2000. Immunohistochemistry: 1/100 - 1/300. Immunofluorescence: 1/200 - 1/1000. ELISA: 1/20000. Not yet tested in other applications.
Immunogen	The antiserum was produced against synthesized peptide derived from human Cytochrome P450 1A1/2. AA range:71-120
Specificity	CYP1A1/2 Polyclonal Antibody detects endogenous levels of CYP1A1/2 protein.
Formulation	Liquid in PBS containing 50% glycerol, 0.5% BSA and 0.02% sodium azide..
Storage	Store at -20°C. Avoid repeated freeze-thaw cycles.
Protein Name	Cytochrome P450 1A1/2
Gene Name	CYP1A1/CYP1A2
Cellular localization	Endoplasmic reticulum membrane ; Peripheral membrane protein . Mitochondrion inner membrane ; Peripheral membrane protein . Microsome membrane ; Peripheral membrane protein . Cytoplasm .
Purification	The antibody was affinity-purified from rabbit antiserum by affinity-chromatography using epitope-specific immunogen.

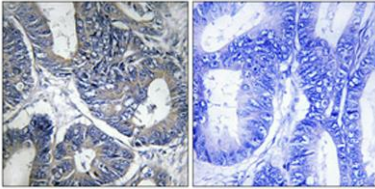
Clonality	Polyclonal
Concentration	1 mg/ml
Observed band	58kD
Human Gene ID	1543/1544
Human Swiss-Prot Number	P04798/P05177
Alternative Names	CYP1A1; Cytochrome P450 1A1; CYPIA1; Cytochrome P450 form 6; Cytochrome P450-C; Cytochrome P450-P1; CYP1A2; Cytochrome P450 1A2; CYPIA2; Cytochrome P(3)450; Cytochrome P450 4; Cytochrome P450-P3

Background

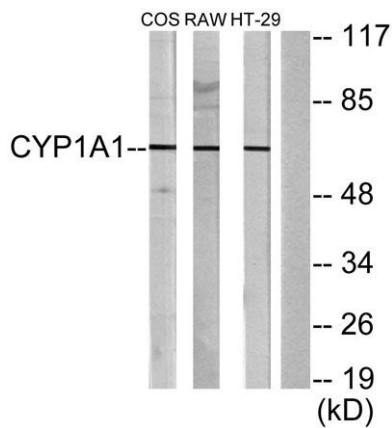
This gene, CYP1A1, encodes a member of the cytochrome P450 superfamily of enzymes. The cytochrome P450 proteins are monooxygenases which catalyze many reactions involved in drug metabolism and synthesis of cholesterol, steroids and other lipids. This protein localizes to the endoplasmic reticulum and its expression is induced by some polycyclic aromatic hydrocarbons (PAHs), some of which are found in cigarette smoke. The enzyme's endogenous substrate is unknown; however, it is able to metabolize some PAHs to carcinogenic intermediates. The gene has been associated with lung cancer risk. A related family member, CYP1A2, is located approximately 25 kb away from CYP1A1 on chromosome 15. Alternative splicing results in multiple transcript variants encoding distinct isoforms. [provided by RefSeq, Jan 2016],



Western Blot analysis of various cells using CYP1A1/2 Polyclonal Antibody



Immunohistochemical analysis of paraffin-embedded Human colon cancer. Antibody was diluted at 1:100(4° overnight). High-pressure and temperature Tris-EDTA,pH8.0 was used for antigen retrieval. Negative contrl (right) obtained from antibody was pre-absorb



Western blot analysis of lysates from COS7, RAW264.7, and HT-29 cells, using Cytochrome P450 1A1/2 Antibody. The lane on the right is blocked with the synthesized peptide.