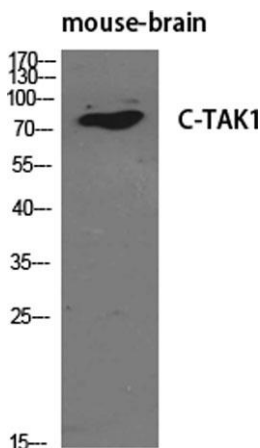


C-TAK1 rabbit pAb**Cat#: orb764943 (Manual)**

For research use only. Not intended for diagnostic use.

Product Name	C-TAK1 rabbit pAb
Host species	Rabbit
Applications	WB;IHC;IF;ELISA
Species Cross-Reactivity	Human;Mouse;Rat
Recommended dilutions	Western Blot: 1/500 - 1/2000. Immunohistochemistry: 1/100 - 1/300. Immunofluorescence: 1/200 - 1/1000. ELISA: 1/40000. Not yet tested in other applications.
Immunogen	The antiserum was produced against synthesized peptide derived from human MARK3. AA range:1-50
Specificity	C-TAK1 Polyclonal Antibody detects endogenous levels of C-TAK1 protein.
Formulation	Liquid in PBS containing 50% glycerol, 0.5% BSA and 0.02% sodium azide..
Storage	Store at -20°C. Avoid repeated freeze-thaw cycles.
Protein Name	MAP/microtubule affinity-regulating kinase 3
Gene Name	MARK3
Cellular localization	Cell membrane ; Peripheral membrane protein . Cell projection, dendrite . Cytoplasm .
Purification	The antibody was affinity-purified from rabbit antiserum by affinity-chromatography using epitope-specific immunogen.
Clonality	Polyclonal

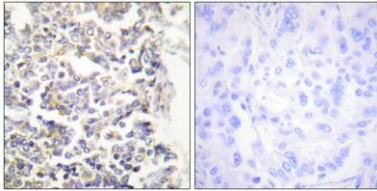
Concentration	1 mg/ml
Observed band	85kD
Human Gene ID	4140
Human Swiss-Prot Number	P27448
Alternative Names	MARK3; CTAK1; EMK2; MAP/microtubule affinity-regulating kinase 3; C-TAK1; cTAK1; Cdc25C-associated protein kinase 1; ELKL motif kinase 2; EMK-2; Protein kinase STK10; Ser/Thr protein kinase PAR-1; Par-1a; Serine/threonine-protein kinase p78
Background	microtubule affinity regulating kinase 3(MARK3) Homo sapiens The protein encoded by this gene is activated by phosphorylation and in turn is involved in the phosphorylation of tau proteins MAP2 and MAP4. Several transcript variants encoding different isoforms have been found for this gene. [provided by RefSeq, Oct 2011],



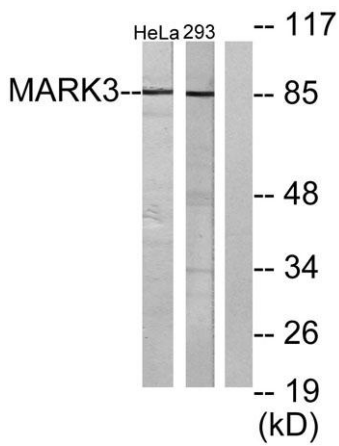
Western Blot analysis of various cells using C-TAK1 Polyclonal Antibody diluted at 1:500



Western Blot analysis of 293 cells using C-TAK1 Polyclonal Antibody diluted at 1:500



Immunohistochemistry analysis of paraffin-embedded human lung carcinoma tissue, using MARK3 Antibody. The picture on the right is blocked with the synthesized peptide.



Western blot analysis of lysates from HeLa and 293 cells, using MARK3 Antibody. The lane on the right is blocked with the synthesized peptide.