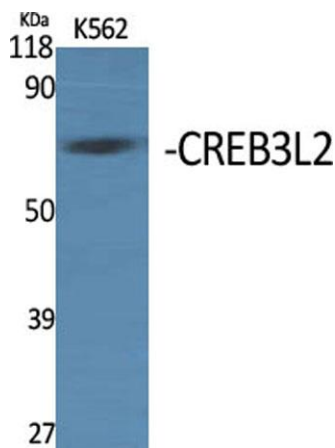


**CREB3L2 rabbit pAb****Cat#: orb764923 (Manual)**

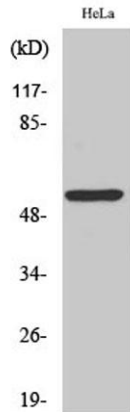
For research use only. Not intended for diagnostic use.

<b>Product Name</b>	CREB3L2 rabbit pAb
<b>Host species</b>	Rabbit
<b>Applications</b>	WB;ELISA
<b>Species Cross-Reactivity</b>	Human;Mouse;Rat
<b>Recommended dilutions</b>	Western Blot: 1/500 - 1/2000. ELISA: 1/10000. Not yet tested in other applications.
<b>Immunogen</b>	The antiserum was produced against synthesized peptide derived from human CREB3L2. AA range:269-318
<b>Specificity</b>	CREB3L2 Polyclonal Antibody detects endogenous levels of CREB3L2 protein.
<b>Formulation</b>	Liquid in PBS containing 50% glycerol, 0.5% BSA and 0.02% sodium azide..
<b>Storage</b>	Store at -20°C. Avoid repeated freeze-thaw cycles.
<b>Protein Name</b>	Cyclic AMP-responsive element-binding protein 3-like protein 2
<b>Gene Name</b>	CREB3L2
<b>Cellular localization</b>	Endoplasmic reticulum membrane ; Single-pass type II membrane protein. ER membrane resident protein. Upon ER stress, translocated to the Golgi apparatus where it is cleaved. The cytosolic N-terminal fragment (processed cyclic AMP-responsive element-binding protein 3-like protein 1) is transported into the nucleus. .; [Processed cyclic AMP-responsive element-binding protein 3-like protein 2]: Nucleus. Upon ER stress, translocated into the nucleus. .

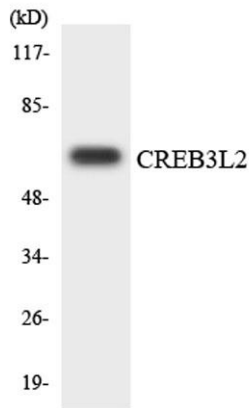
<b>Purification</b>	The antibody was affinity-purified from rabbit antiserum by affinity-chromatography using epitope-specific immunogen.
<b>Clonality</b>	Polyclonal
<b>Concentration</b>	1 mg/ml
<b>Observed band</b>	58kD
<b>Human Gene ID</b>	64764
<b>Human Swiss-Prot Number</b>	Q70SY1
<b>Alternative Names</b>	CREB3L2; BBF2H7; Cyclic AMP-responsive element-binding protein 3-like protein 2; cAMP-responsive element-binding protein 3-like protein 2; BBF2 human homolog on chromosome 7
<b>Background</b>	This gene encodes a member of the oasis bZIP transcription factor family. Members of this family can dimerize but form homodimers only. The encoded protein is a transcriptional activator. Translocations between this gene on chromosome 7 and the gene fused in sarcoma on chromosome 16 can be found in some tumors. Multiple transcript variants encoding different isoforms have been found for this gene. [provided by RefSeq, Dec 2011],



Western Blot analysis of various cells using CREB3L2 Polyclonal Antibody



Western Blot analysis of HeLa cells using CREB3L2 Polyclonal Antibody



Western blot analysis of the lysates from 293 cells using CREB3L2 antibody.