

CNPase rabbit pAb**Cat#: orb764890 (Manual)**

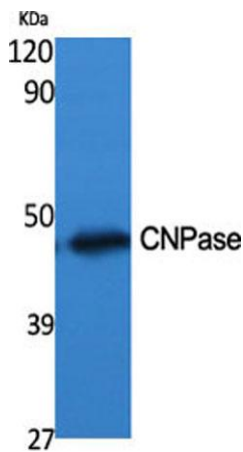
For research use only. Not intended for diagnostic use.

Product Name	CNPase rabbit pAb
Host species	Rabbit
Applications	WB;IHC;IF;ELISA
Species Cross-Reactivity	Human;Mouse;Rat
Recommended dilutions	Western Blot: 1/500 - 1/2000. Immunohistochemistry: 1/100 - 1/300. ELISA: 1/40000. Not yet tested in other applications.
Immunogen	The antiserum was produced against synthesized peptide derived from human CNPase. AA range:59-108
Specificity	CNPase Polyclonal Antibody detects endogenous levels of CNPase protein.
Formulation	Liquid in PBS containing 50% glycerol, 0.5% BSA and 0.02% sodium azide..
Storage	Store at -20°C. Avoid repeated freeze-thaw cycles.
Protein Name	2',3'-cyclic-nucleotide 3'-phosphodiesterase
Gene Name	CNP
Cellular localization	Membrane ; Lipid-anchor . Melanosome . Firmly bound to membrane structures of brain white matter. .
Purification	The antibody was affinity-purified from rabbit antiserum by affinity-chromatography using epitope-specific immunogen.
Clonality	Polyclonal

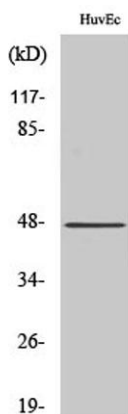
Concentration	1 mg/ml
Observed band	47kD
Human Gene ID	1267
Human Swiss-Prot Number	P09543
Alternative Names	CNP; 2'; 3'-cyclic-nucleotide 3'-phosphodiesterase; CNP; CNPase

Background

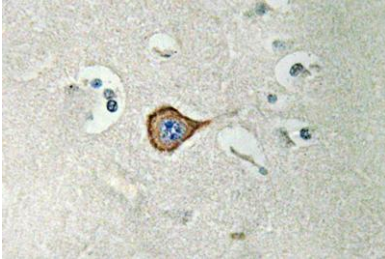
catalytic activity:Nucleoside 2',3'-cyclic phosphate + H₂O = nucleoside 2'-phosphate.,similarity:Belongs to the cyclic nucleotide phosphodiesterase family.,subcellular location:Firmly bound to membrane structures of brain white matter. Identified by mass spectrometry in melanosome fractions from stage I to stage IV.,



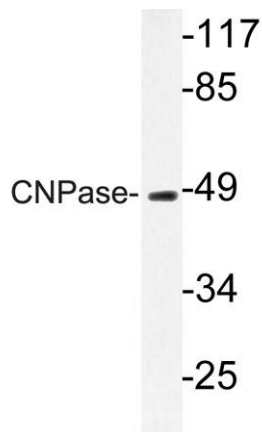
Western Blot analysis of various cells using CNPase Polyclonal Antibody diluted at 1:500



Western Blot analysis of MCF7 cells using CNPase Polyclonal Antibody diluted at 1:500



Immunohistochemistry analysis of CNPase antibody in paraffin-embedded human brain tissue.



Western blot analysis of lysate from HUVEC cells, using CNPase antibody.