

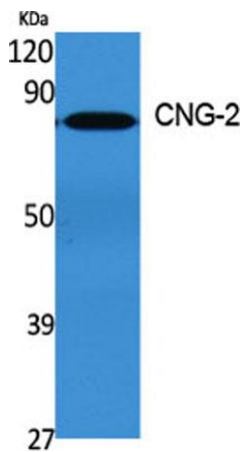
CNG-2 rabbit pAb**Cat#: orb764888 (Manual)**

For research use only. Not intended for diagnostic use.

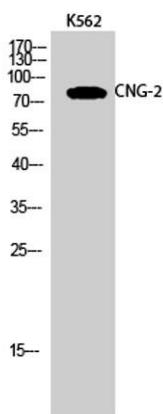
Product Name	CNG-2 rabbit pAb
Host species	Rabbit
Applications	WB;IF;ELISA
Species Cross-Reactivity	Human;Mouse;Rat
Recommended dilutions	Western Blot: 1/500 - 1/2000. Immunofluorescence: 1/200 - 1/1000. ELISA: 1/40000. Not yet tested in other applications.
Immunogen	The antiserum was produced against synthesized peptide derived from human CNGA2. AA range:391-440
Specificity	CNG-2 Polyclonal Antibody detects endogenous levels of CNG-2 protein.
Formulation	Liquid in PBS containing 50% glycerol, 0.5% BSA and 0.02% sodium azide..
Storage	Store at -20°C. Avoid repeated freeze-thaw cycles.
Protein Name	Cyclic nucleotide-gated olfactory channel
Gene Name	CNGA2
Cellular localization	Membrane; Multi-pass membrane protein.
Purification	The antibody was affinity-purified from rabbit antiserum by affinity-chromatography using epitope-specific immunogen.
Clonality	Polyclonal

Concentration	1 mg/ml
Observed band	83kD
Human Gene ID	1260
Human Swiss-Prot Number	Q16280
Alternative Names	CNGA2; CNCA; CNCA1; CNCG2; Cyclic nucleotide-gated olfactory channel; Cyclic nucleotide-gated cation channel 2; Cyclic nucleotide-gated channel alpha-2; CNG channel alpha-2; CNG-2; CNG2

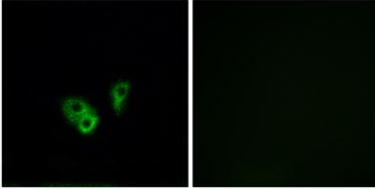
Background The protein encoded by this gene represents the alpha subunit of a cyclic nucleotide-gated olfactory channel. The encoded protein contains a carboxy-terminal leucine zipper that mediates channel formation. [provided by RefSeq, Jan 2010],



Western Blot analysis of various cells using CNG-2 Polyclonal Antibody



Western Blot analysis of K562 cells using CNG-2 Polyclonal Antibody



Immunofluorescence analysis of A549 cells, using CNGA2 Antibody. The picture on the right is blocked with the synthesized peptide.