

CNG-1 β rabbit pAb**Cat#: orb764887 (Manual)**

For research use only. Not intended for diagnostic use.

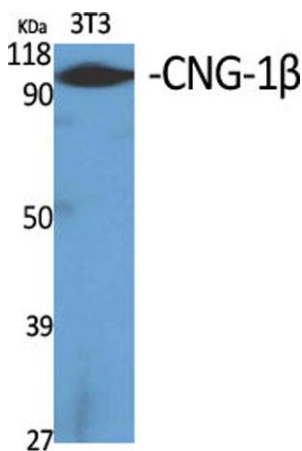
Product Name	CNG-1 β rabbit pAb
Host species	Rabbit
Applications	WB;ELISA
Species Cross-Reactivity	Human;Mouse;Rat
Recommended dilutions	Western Blot: 1/500 - 1/2000. ELISA: 1/10000. Not yet tested in other applications.
Immunogen	The antiserum was produced against synthesized peptide derived from human CNGB1. AA range:571-620
Specificity	CNG-1 β Polyclonal Antibody detects endogenous levels of CNG-1 β protein.
Formulation	Liquid in PBS containing 50% glycerol, 0.5% BSA and 0.02% sodium azide..
Storage	Store at -20°C. Avoid repeated freeze-thaw cycles.
Protein Name	Cyclic nucleotide-gated cation channel beta-1
Gene Name	CNGB1
Cellular localization	Membrane; Multi-pass membrane protein.
Purification	The antibody was affinity-purified from rabbit antiserum by affinity-chromatography using epitope-specific immunogen.
Clonality	Polyclonal

Explore. Bioreagents.

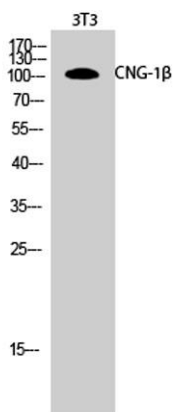
Concentration	1 mg/ml
Observed band	102kD
Human Gene ID	1258
Human Swiss-Prot Number	Q14028
Alternative Names	CNGB1; CNCG2; CNCG3L; CNCG4; RCNC2; Cyclic nucleotide-gated cation channel beta-1; Cyclic nucleotide-gated cation channel 4; CNG channel 4; CNG-4; CNG4; Cyclic nucleotide-gated cation channel gamma; Cyclic nucleotide-gated cation channel mo

Background

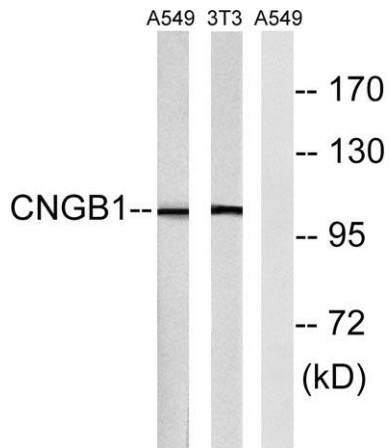
In humans, the rod photoreceptor cGMP-gated cation channel helps regulate ion flow into the rod photoreceptor outer segment in response to light-induced alteration of the levels of intracellular cGMP. This channel consists of two subunits, alpha and beta, with the protein encoded by this gene representing the beta subunit. Defects in this gene are a cause of cause of retinitis pigmentosa type 45. Three transcript variants encoding different isoforms have been found for this gene. [provided by RefSeq, Oct 2013],



Western Blot analysis of various cells using CNG-1 β Polyclonal Antibody



Western Blot analysis of 3T3 cells using CNG-1 β Polyclonal Antibody



Western blot analysis of lysates from NIH/3T3 and A549 cells, using CNGB1 Antibody. The lane on the right is blocked with the synthesized peptide.