

c-Maf rabbit pAb**Cat#: orb764882 (Manual)**

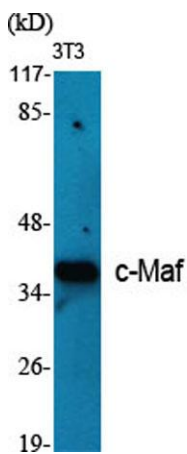
For research use only. Not intended for diagnostic use.

Product Name	c-Maf rabbit pAb
Host species	Rabbit
Applications	WB;ELISA
Species Cross-Reactivity	Human;Mouse;Rat
Recommended dilutions	Western Blot: 1/500 - 1/2000. ELISA: 1/10000. Not yet tested in other applications.
Immunogen	The antiserum was produced against synthesized peptide derived from human Maf. AA range:301-350
Specificity	c-Maf Polyclonal Antibody detects endogenous levels of c-Maf protein.
Formulation	Liquid in PBS containing 50% glycerol, 0.5% BSA and 0.02% sodium azide..
Storage	Store at -20°C. Avoid repeated freeze-thaw cycles.
Protein Name	Transcription factor Maf
Gene Name	MAF
Cellular localization	Nucleus .
Purification	The antibody was affinity-purified from rabbit antiserum by affinity-chromatography using epitope-specific immunogen.
Clonality	Polyclonal

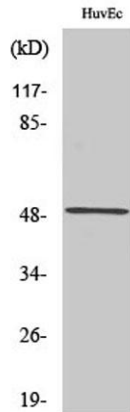
Concentration	1 mg/ml
Observed band	41kD
Human Gene ID	4094
Human Swiss-Prot Number	O75444
Alternative Names	MAF; Transcription factor Maf; Proto-oncogene c-Maf; V-maf musculoaponeurotic fibrosarcoma oncogene homolog

Background

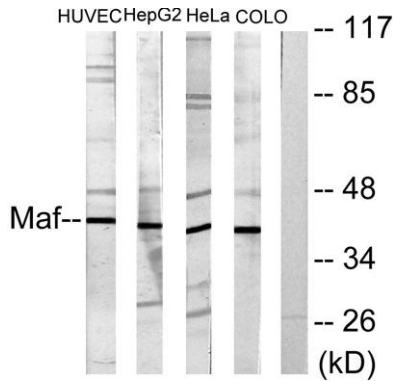
The protein encoded by this gene is a DNA-binding, leucine zipper-containing transcription factor that acts as a homodimer or as a heterodimer. Depending on the binding site and binding partner, the encoded protein can be a transcriptional activator or repressor. This protein plays a role in the regulation of several cellular processes, including embryonic lens fiber cell development, increased T-cell susceptibility to apoptosis, and chondrocyte terminal differentiation. Defects in this gene are a cause of juvenile-onset pulverulent cataract as well as congenital cerulean cataract 4 (CCA4). Two transcript variants encoding different isoforms have been found for this gene. [provided by RefSeq, Jan 2010],



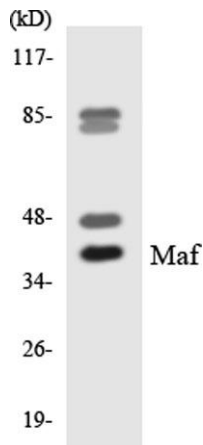
Western Blot analysis of various cells using c-Maf Polyclonal Antibody diluted at 1:500



Western Blot analysis of COLO205 cells using c-Maf Polyclonal Antibody diluted at 1:500



Western blot analysis of lysates from HUVEC, HepG2, HeLa, and COLO205 cells, using Maf Antibody. The lane on the right is blocked with the synthesized peptide.



Western blot analysis of the lysates from HeLa cells using Maf antibody.