

Claudin-1 rabbit pAb**Cat#: orb764860 (Manual)**

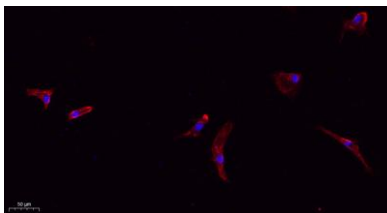
For research use only. Not intended for diagnostic use.

Product Name	Claudin-1 rabbit pAb
Host species	Rabbit
Applications	WB;IHC;IF;ELISA
Species Cross-Reactivity	Human;Mouse;Rat
Recommended dilutions	Western Blot: 1/500 - 1/2000. IHC-p: 1:100-300 ELISA: 1/20000. IF 1:100-300 Not yet tested in other applications.
Immunogen	The antiserum was produced against synthesized peptide derived from human Claudin 1. AA range:162-211
Specificity	Claudin-1 Polyclonal Antibody detects endogenous levels of Claudin-1 protein.
Formulation	Liquid in PBS containing 50% glycerol, 0.5% BSA and 0.02% sodium azide..
Storage	Store at -20°C. Avoid repeated freeze-thaw cycles.
Protein Name	Claudin-1
Gene Name	CLDN1
Cellular localization	Cell junction, tight junction . Cell membrane ; Multi-pass membrane protein . Basolateral cell membrane . Associates with CD81 and the CLDN1-CD81 complex localizes to the basolateral cell membrane. .
Purification	The antibody was affinity-purified from rabbit antiserum by affinity-chromatography using epitope-specific immunogen.

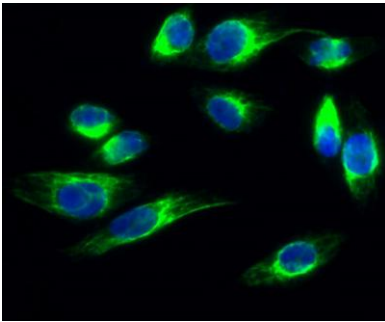
Clonality	Polyclonal
Concentration	1 mg/ml
Observed band	22kD
Human Gene ID	9076
Human Swiss-Prot Number	O95832
Alternative Names	CLDN1; CLD1; SEMP1; Claudin-1; Senescence-associated epithelial membrane protein

Background

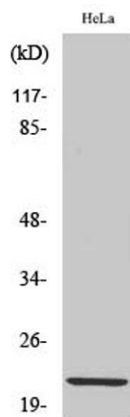
Tight junctions represent one mode of cell-to-cell adhesion in epithelial or endothelial cell sheets, forming continuous seals around cells and serving as a physical barrier to prevent solutes and water from passing freely through the paracellular space. These junctions are comprised of sets of continuous networking strands in the outwardly facing cytoplasmic leaflet, with complementary grooves in the inwardly facing extracytoplasmic leaflet. The protein encoded by this gene, a member of the claudin family, is an integral membrane protein and a component of tight junction strands. Loss of function mutations result in neonatal ichthyosis-sclerosing cholangitis syndrome. [provided by RefSeq, Jul 2008],



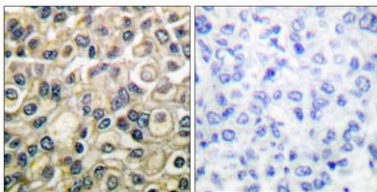
Immunofluorescence analysis of A549. 1,primary Antibody(red) was diluted at 1:200(4°C overnight). 2, Goat Anti Rabbit IgG (H&L) - Alexa Fluor 594 Secondary antibody was diluted at 1:1000(room temperature, 50min).3, Picture B: DAPI(blue) 10min.



Immunofluorescence analysis of HeLa cell. 1, Claudin-1 Polyclonal Antibody (green) was diluted at 1:200 (4° overnight). 2, Goat Anti Rabbit Alexa Fluor 488 Catalog: RS3211 was diluted at 1:1000 (room temperature, 50min). 3 DAPI (blue) 10min.



Western Blot analysis of various cells using Claudin-1 Polyclonal Antibody diluted at 1:1000



Immunohistochemistry analysis of paraffin-embedded human breast carcinoma tissue, using Claudin 1 Antibody. The picture on the right is blocked with the synthesized peptide.